

# Working Instructions

- mechanical -



*Xperia S*

*LT26i, LT26ii, SO-02D*

## CONTENTS

<b>1</b>	<b>Exterior Views.....</b>	<b>5</b>
1.1	LT26i .....	5
<b>2</b>	<b>Tools .....</b>	<b>6</b>
<b>3</b>	<b>Disassembly.....</b>	<b>7</b>
3.1	Cover Rear Assy .....	7
3.2	Cover Bottom .....	7
3.3	Battery.....	8
3.4	Rear Frame Assy.....	9
3.5	Main Camera.....	10
3.6	Main PBA .....	10
3.7	Cover Transparent Assy & Cover Front Assy.....	12
<b>4</b>	<b>Replacement .....</b>	<b>14</b>
4.1	Cover Rear Assy .....	14
4.2	Cover Bottom .....	14
4.3	Battery.....	14
4.4	Rear Frame Assy.....	14
4.5	Main Camera.....	15
4.6	Cover Front Assy .....	15
4.7	Cover Transparent Assy.....	15
4.8	Ant GPS .....	16
4.9	Audio Jack.....	18
4.10	Cap HDMI .....	20
4.11	Cap RF .....	21
4.12	Cap USB.....	22
4.13	Carrier Holder Bottom.....	24
4.14	Carrier Holder Proximity Sensor .....	25
4.15	Carrier Vibrator.....	26
4.16	Core Unit Label.....	27
4.17	Cushion Camera 1.....	29
4.18	Cushion of Speaker.....	30
4.19	Cushion Receiver .....	32
4.20	Cushion Speaker .....	34
4.21	Cushion Sub PBA .....	36
4.22	Cushion Vib .....	38
4.23	Ear Speaker .....	39
4.24	Foil Adhesive Audio Jack.....	41
4.25	Foil Adhesive GPS Ant .....	43
4.26	Foil Adhesive NFC PBA .....	45
4.27	Foil Adhesive Speaker .....	47

4.28	Foil Adhesive Transparent Front .....	49
4.29	FPC Jack Assy .....	51
4.30	FPC Main Assy .....	53
4.30.1	FPC Main Assy (Marked).....	54
4.30.2	FPC Main Assy (Unmarked).....	58
4.31	Key Camera .....	62
4.32	Key On/Off .....	63
4.33	Key Volume .....	64
4.34	Loudspeaker.....	65
4.35	Main Antenna.....	67
4.36	NFC Antenna .....	69
4.37	PBA Bottom .....	70
4.38	PBA NFC .....	71
4.39	RF Cable .....	73
4.40	Sheet GPS Ant.....	74
4.41	Sheet LCD FPC.....	75
4.42	Sheet NFC FPC.....	77
4.43	Sheet NFC Shield .....	78
4.44	Sheet Protection LCD .....	80
4.45	Shield Can BB A.....	81
4.46	Shield Can BB B.....	82
4.47	Shield Can Lid Non Cell.....	83
4.48	Shield Can RF.....	84
4.49	Water Indicator .....	85
4.50	Water Indicator L.....	86
4.51	Board Swap - Replacement .....	87
4.52	Board Swap – Change Label .....	87
4.53	Board Swap – Customize of Software .....	87
5	Reassembly.....	88
5.1	Cover Front Assy & Cover Transparent Assy.....	88
5.2	Main PBA .....	91
5.3	Main Camera.....	92
5.4	Rear Frame Assy.....	93
5.5	Battery.....	93
5.6	Cover Bottom .....	96
5.7	Cover Rear Assy .....	97
6	Country of Origin Barcodes for Brazil/VIVO Labels.....	98
7	Revision History .....	99

# SONY

make.believe

*Working Instruction Repair Instruction Mechanical/*

***For general information about mechanical repair related issues, refer to***

***1220-1333: Generic Repair Manual - mechanical***

## 1 Exterior Views

### 1.1 LT26i



## 2 Tools

### SPECIAL TOOLS

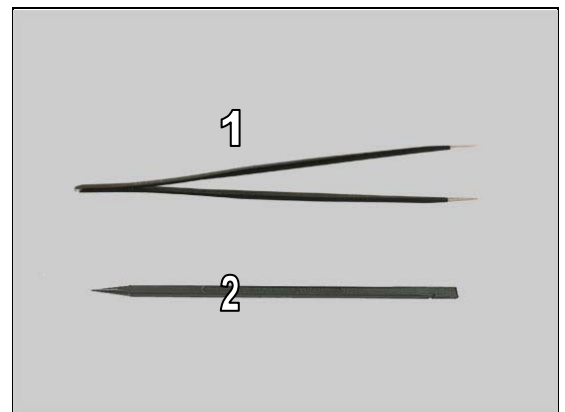
1. Torque Screwdriver
2. Flex Film Assembly Tool
3. Front Opening Tool
4. Bits(T5)
5. Bits(JCIS No 0)
6. Guitar Pick



**For part no's on the tools above, refer to the 'Tools Catalogue/Matrix'!**

### STANDARD TOOLS

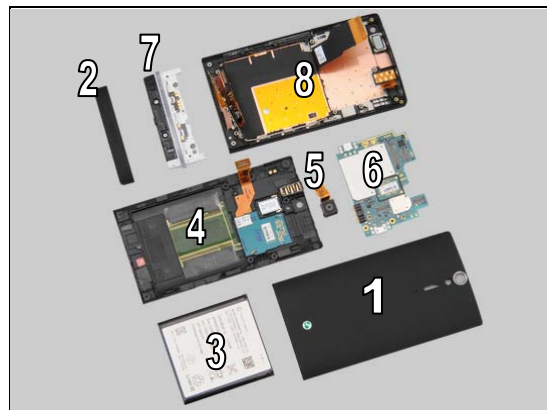
1. Tweezers
2. Nylon Pointer



## 3 Disassembly

The disassembly is done in the following order:

1. Cover Rear Assy
2. Cover Bottom
3. Battery
4. Rear Frame Assy
5. Main Camera
6. Main PBA
7. Cover Transparent Assy
8. Cover Front Assy



### 3.1 Cover Rear Assy

Push upwards to unsnap the hooks of the Cover Rear Assy from the bottom gently and remove it.



### 3.2 Cover Bottom

Push the Cover Bottom to show the gap between the Cover Bottom and the Cover Transparent Assy with your fingers and insert Guitar Pick to release the hooks of the Cover Bottom.



Remove the Cover Bottom with your fingers.

**Scrap! Not to be reused!**

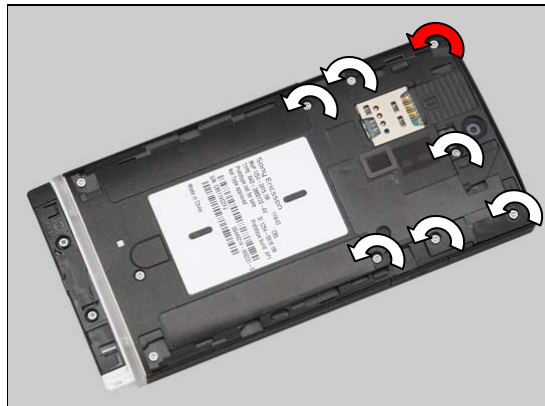


## Disassembly

### 3.3 Battery

Check the screw on the left corner.

If it is JCIS0 screw, remove the one Screw Len:2.6 Diam:1.4 M by Bits(JCIS No 0).Remove the six Screw 3.5x1.4 by T5. Or else, Remove the seven Screw 3.5x1.4 by T5.



Remove the three Screw 3.5x1.4 M by Bits(JCIS No 0).

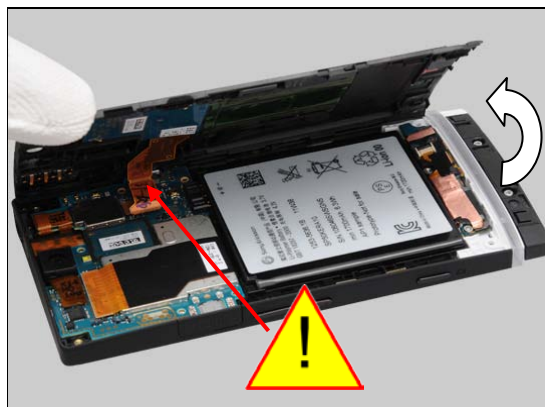


Insert the Guitar Pick from the right bottom as shown in the picture and gently slide back and forth to release the hooks of the Rear Frame.



Raise the left side of the Rear Frame approximately 60° from the right side.

**Do not open the cover more than 60° and do not stretch the NFC PFC!**

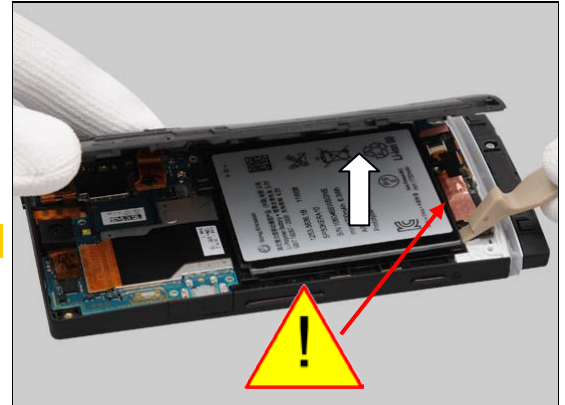




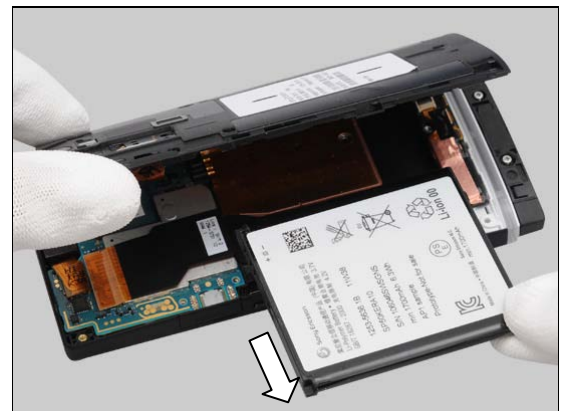
## Disassembly

Insert the Front Opening Tool and raise the bottom of the Battery to release it.

**Do not touch the FPC area beside the Battery!**



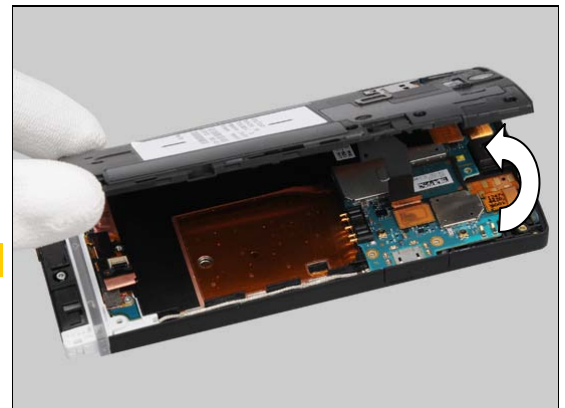
Remove the Battery.



### 3.4 Rear Frame Assy

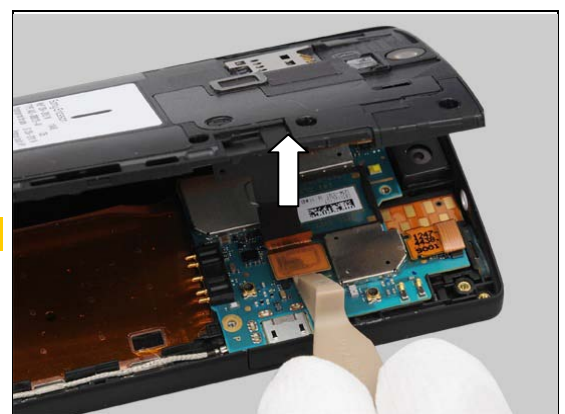
Change to raise another side of the Rear Frame.

**Do not open the Rear Frame Assy more than 60°!**



Unsnap the BtB connector by using the Front Opening Tool.

**No conductive tools should be used!**



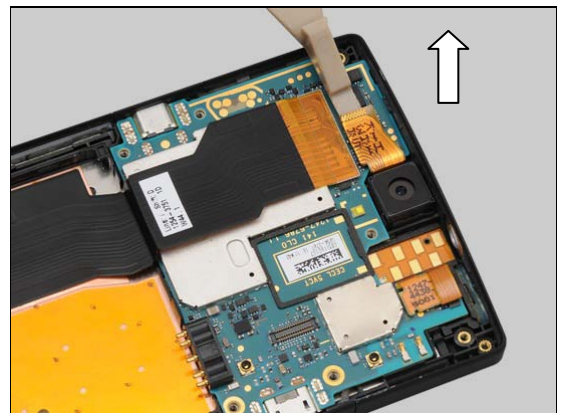
## Disassembly

Remove the Rear Frame Assy with your fingers.

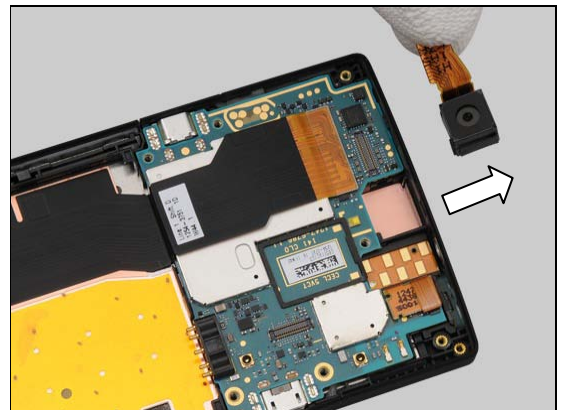


### 3.5 Main Camera

Unsnap the BtB connector by using the Front Opening Tool.

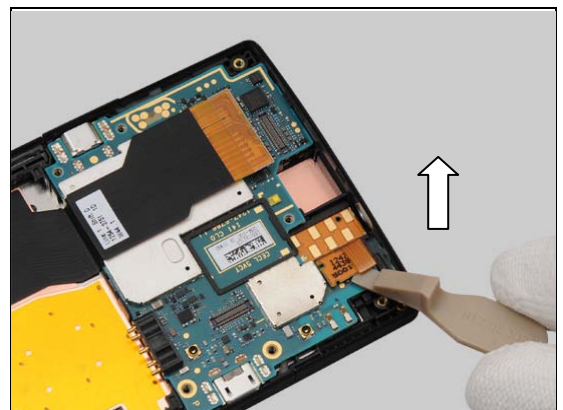


Remove the Main Camera with your fingers.



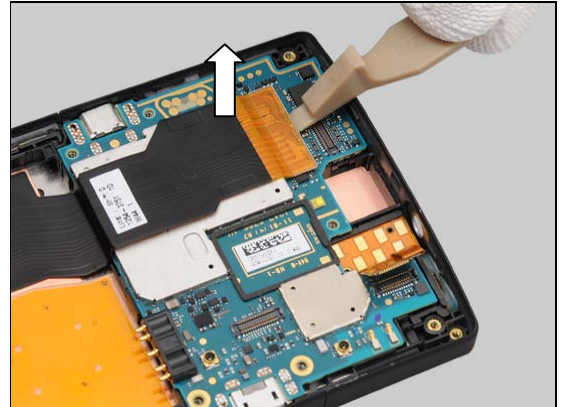
### 3.6 Main PBA

Unsnap the FPC Jack BtB connector by using the Front Opening Tool.

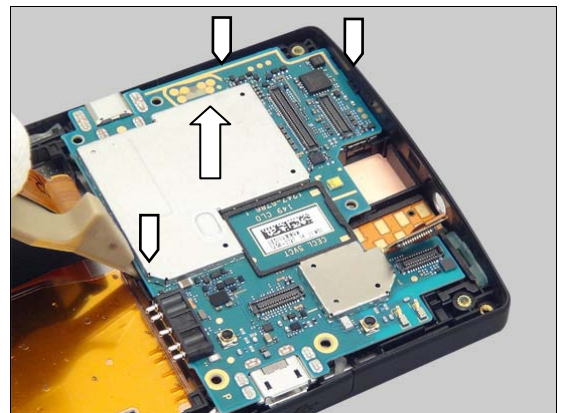


## Disassembly

Unsnap the Main FPC BtB connector by using the Front Opening Tool.

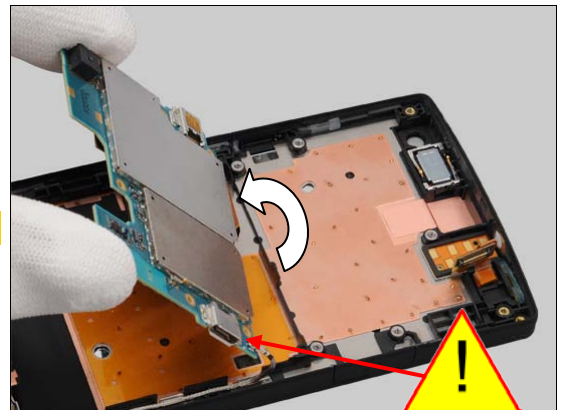


Insert the Front Opening Tool to release the Main PBA.

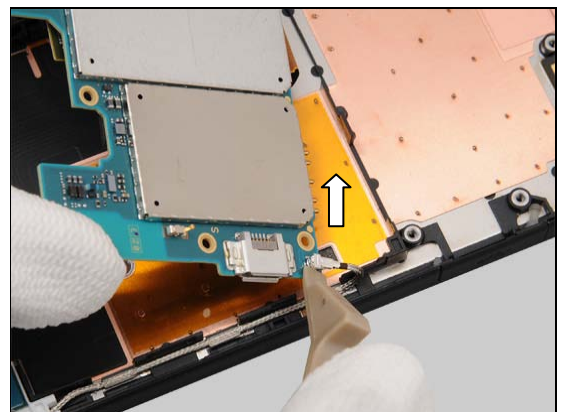


Turn the main PBA over gently.

**Do not stretch the RF Cable!**

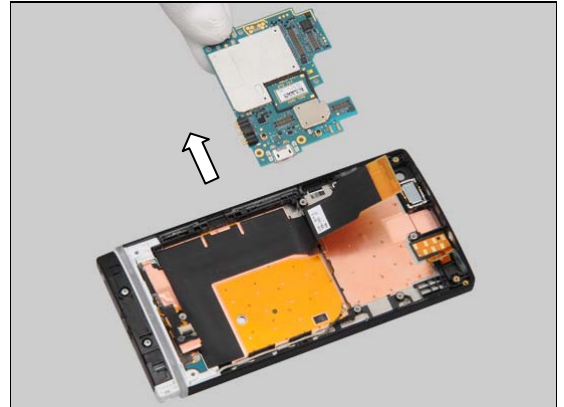


Unsnap one side of the RF Cable by using the Front Opening Tool.



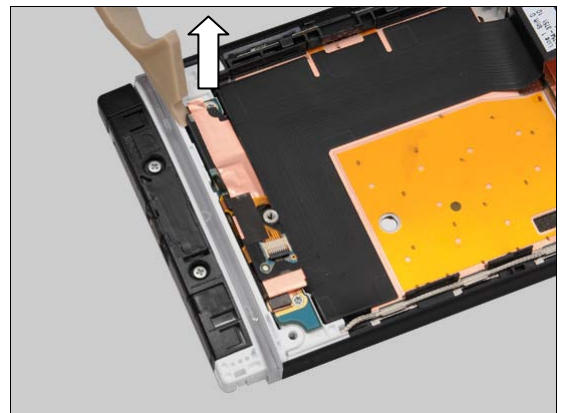
## Disassembly

Remove the Main PBA with your fingers.

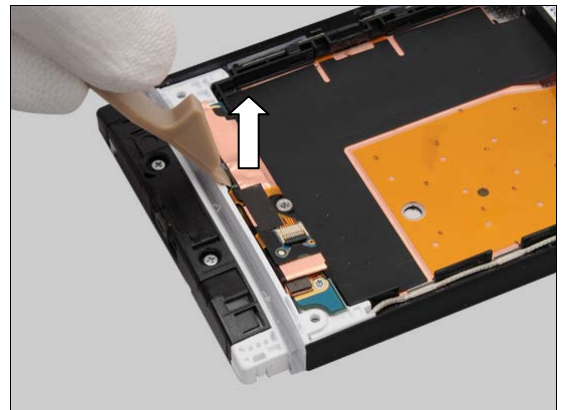


### 3.7 Cover Transparent Assy & Cover Front Assy

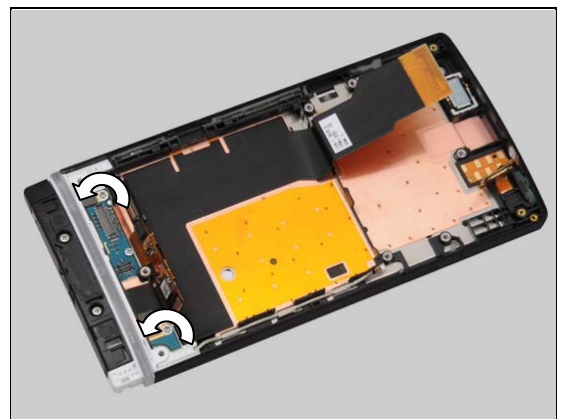
Unsnap the LCD BtB connector by using the Front Opening Tool.



Unsnap the touch panel BtB connector by using the Front Opening Tool.



Remove the two Screw 3.5x1.4 M by Bits(JCIS No 0).

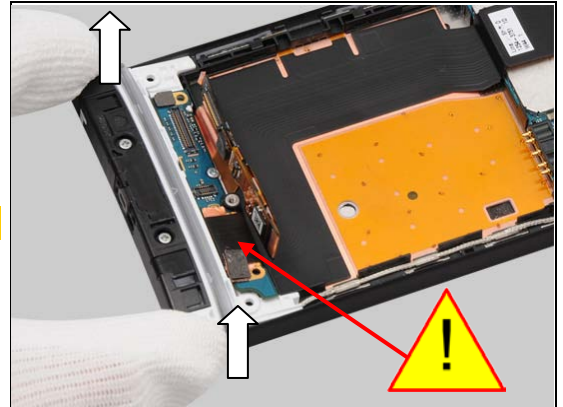




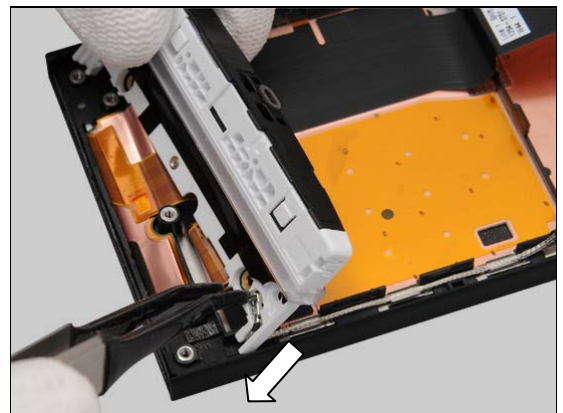
## Disassembly

Lift up the Cover Transparent and Turn it over gently.

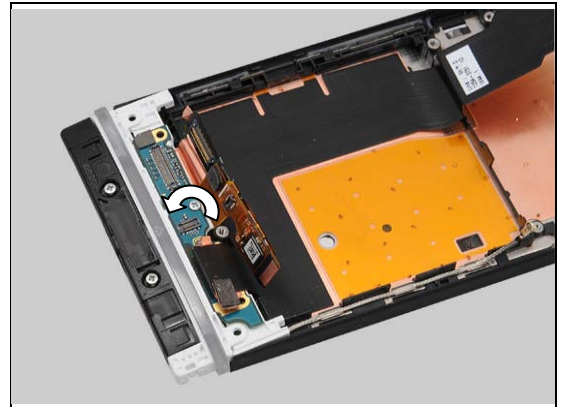
**Do not open the Sheet ACF Relay from the PBA!**



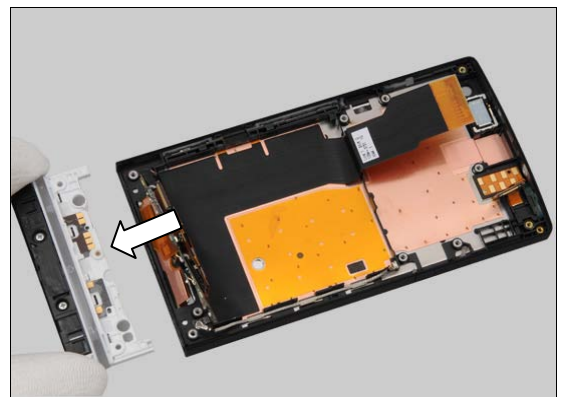
Unsnap one side of the RF Cable by using the Flex Film Assembly Tool.



Remove the one screw Len:2.0 Diam:1.4 by Bits(JCIS No 0).



Remove the Cover Transparent Assy.



## 4 Replacement

### 4.1 Cover Rear Assy

*Follow the 3.1 Disassembly instructions!*

Prepare the new Cover Rear Assy.

*Follow the 5.7 Reassembly instructions!*



### 4.2 Cover Bottom

*Follow the 3.2 Disassembly instructions!*

Prepare the new Cover Bottom.

*Follow the 5.6 Reassembly instructions!*



### 4.3 Battery

*Follow the 3.1, 3.3 Disassembly instructions!*

Prepare the new Battery.

*Follow the 5.5 , 5.7 Reassembly instructions!*



### 4.4 Rear Frame Assy

*Follow the 3.1,3.3 and 3.4 Disassembly instructions!*

*Follow the 4.8, 4.9, 4.11, 4.37, Removal instructions!*

Prepare the new Rear Frame Assy.

*Follow the 4.8, 4.9, 4.11, 4.16, 4.18, 4.24, 4.25, 4.26, 4.27, 4.34, 4.36, 4.38, 4.49, 4.50 Installation instructions!*

*Follow the 5.4 ,5.5, 5.7 Reassembly instructions!*



## Replacement

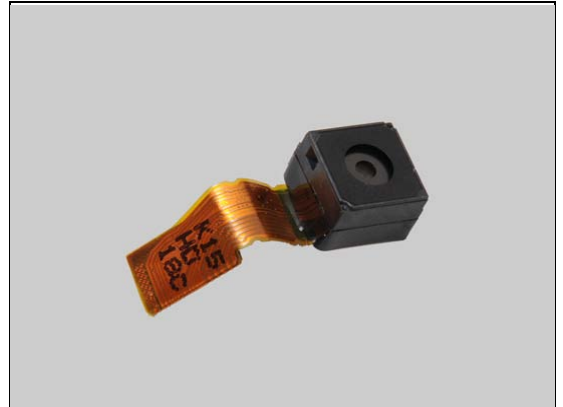
### 4.5 Main Camera

*Follow the 3.1, 3.3 – 3.5 Disassembly instructions!*

Prepare a new Main Camera.

*Follow the 4.17 Installation instructions!*

*Follow the 5.3 – 5.5, 5.7 Reassembly instructions!*



### 4.6 Cover Front Assy

*Follow the 3.1, 3.3 – 3.7 Disassembly instructions!*

*Follow the 4.10, 4.12, 4.14, 4.23, 4.29, 4.31, 4.32, 4.33, 4.39 Removal instructions!*

Prepare a new Cover Front Assy.

*Follow the 4.10, 4.12, 4.14, 4.19, 4.21, 4.23, 4.29, 4.30, 4.31, 4.32, 4.33, 4.39 Installation instructions!*

*Follow the 5.1 – 5.5, 5.7 Reassembly instructions!*



### 4.7 Cover Transparent Assy

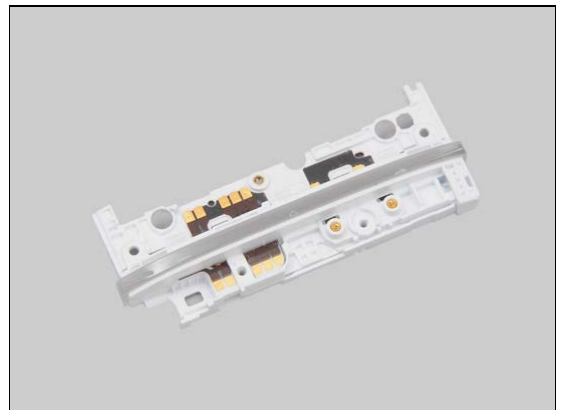
*Follow the 3.1 – 3.4, 3.7 Disassembly instructions!*

*Follow the 4.35, 4.13, 4.37 Removal instructions!*

Prepare the new Cover Transparent Assy.

*Follow the 4.37, 4.13, 4.35, 4.28 Installation instructions!*

*Follow the 5.1, 5.4 – 5.7 Reassembly instructions!*



## Replacement

### 4.8 Ant GPS

*Follow the 3.1, 3.3 – 3.4 Disassembly instructions!*

*Follow the 4.25 Removal instructions!*

Carry out the Removal as described below.

Prepare the new Ant GPS.

Carry out the Installation as described below.

*Follow the 4.40 Installation instructions!*

*Follow the 4.25 Installation instructions!*

*Follow the 5.4, 5.5, 5.7 Reassembly instructions!*

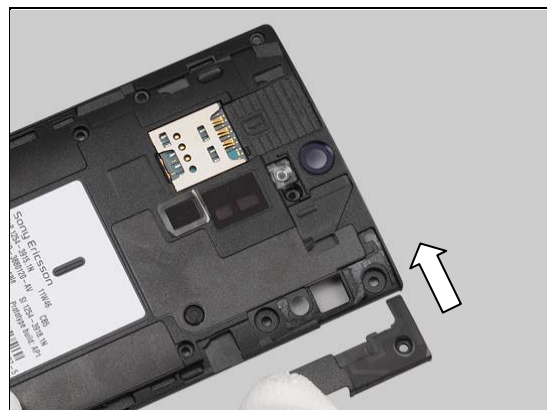
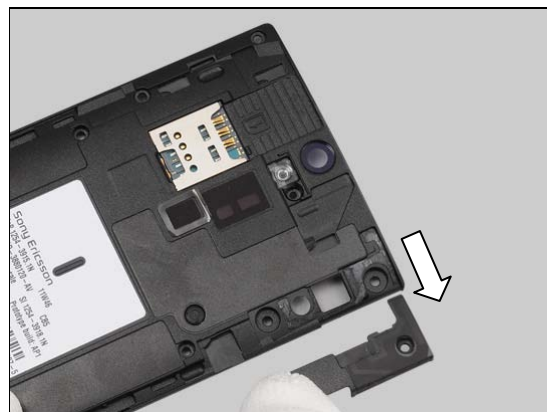
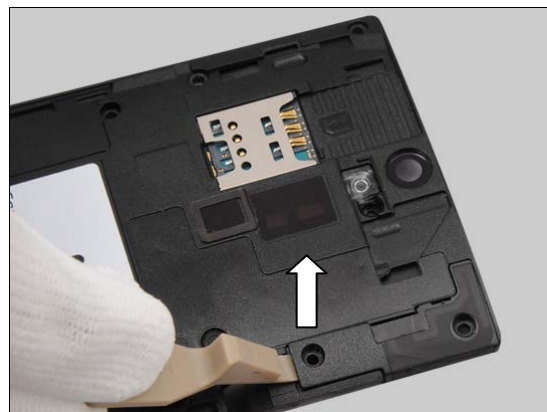
#### REMOVAL

Detach the Ant GPS by using the Front Opening Tool.

Remove it with your fingers.

#### INSTALLATION

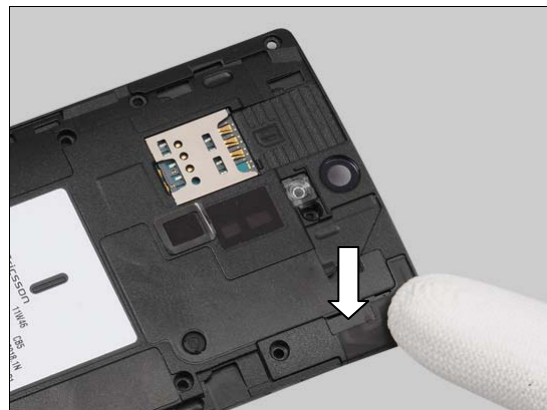
Place the new Ant GPS in the correct position.





## Replacement: Ant GPS

Press to secure its attachment.



## Replacement

### 4.9 Audio Jack

*Follow the 3.1, 3.3, 3.4 Disassembly instructions!*

*Follow the 4.24 Removal instructions!*

Carry out the Removal as described below.

Prepare the new Audio Jack

*Follow the 4.24 Installation instructions!*

Carry out the Installation as described below.

*Follow the 5.4, 5.5, 5.7 Reassembly instructions!*

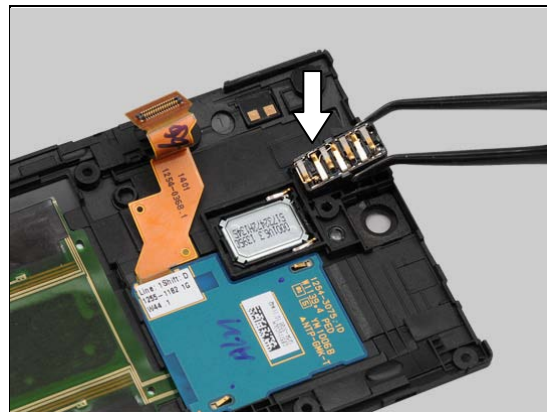
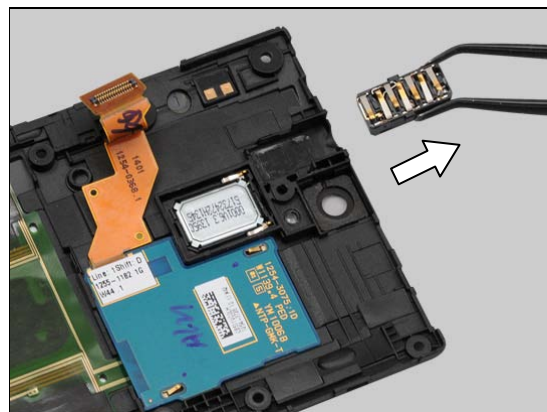
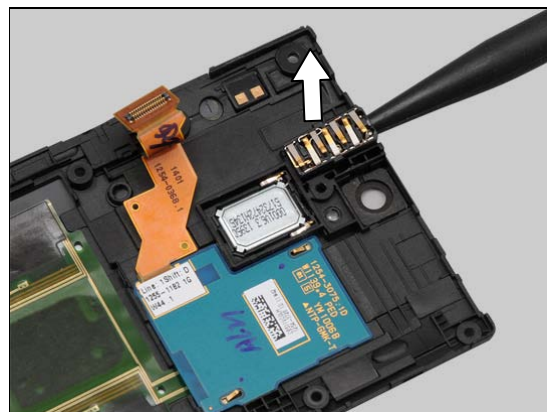
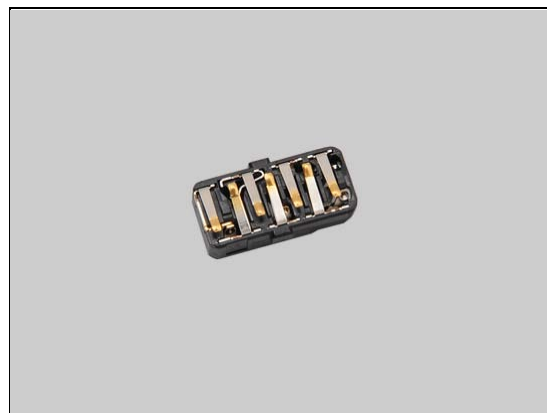
#### REMOVAL

Insert the Nylon Pointer into the hole of the Audio Jack connector to release it.

Remove the Audio Jack by using the Flex Film Assembly Tool.

#### INSTALLATION

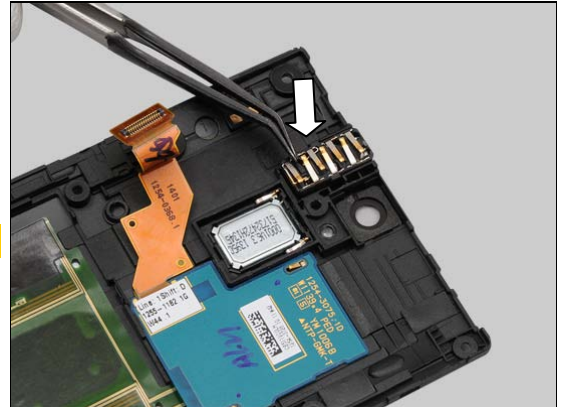
Place the new Audio Jack into its socket.



## Replacement: Audio Jack

Press to secure its position by using the Flex Film Assembly Tool.

**Do not touch the contact pins on the Audio Jack!**



## Replacement

### 4.10 Cap HDMI

*Follow the 3.1, 3.3 – 3.6 Disassembly instructions!*

Carry out the Removal as described below.

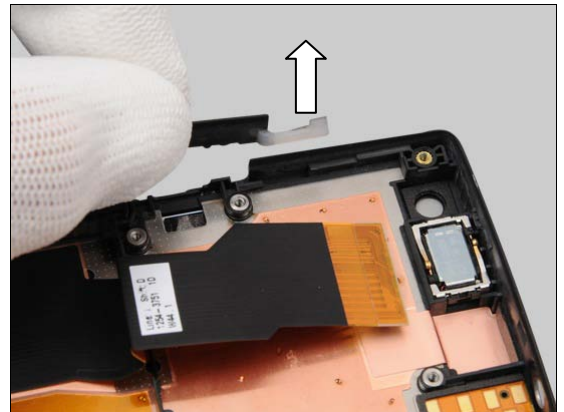
Prepare the new Cap HDMI.

Carry out the Installation as described below.

*Follow the 5.2 –5.5, 5.7 Reassembly instructions!*

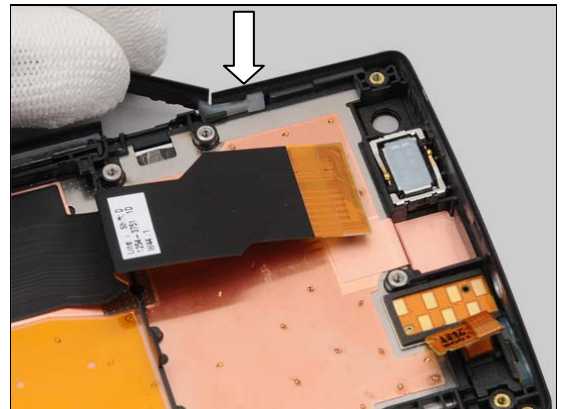
#### REMOVAL

Lift up the Cap HDMI to remove it with your fingers.

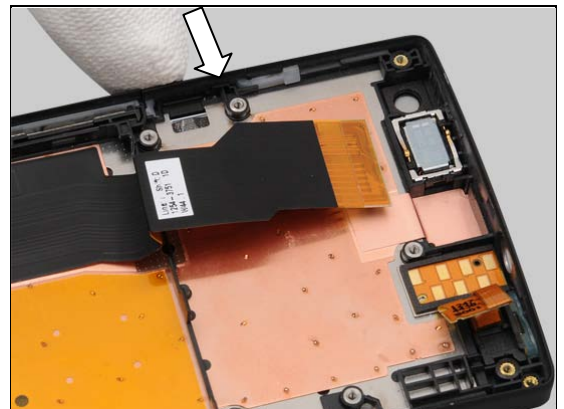


#### INSTALLATION

Place the Cap HDMI in the correct position as shown in the picture.



Press to secure its position.



## Replacement

### 4.11 Cap RF

*Follow the 3.1 Disassembly instructions!*

Carry out the Removal as described below.

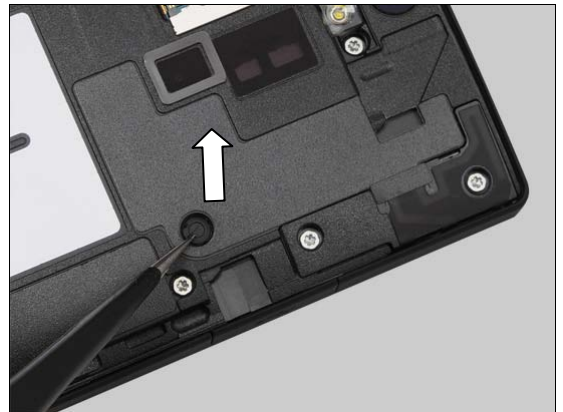
Prepare the new Cap RF.

Carry out the Installation as described below.

*Follow the 5.7 Reassembly instructions!*

#### REMOVAL

Lift up the Cap RF by using the Tweezers and remove it.

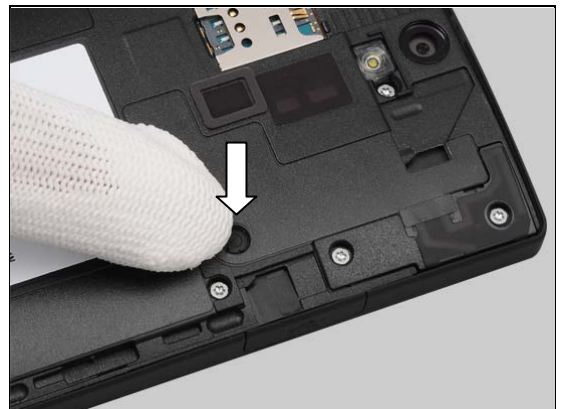


#### INSTALLATION

Place the new Cap RF in the correct position.



Press the Cap RF into its proper position.



## Replacement

### 4.12 Cap USB

Carry out the Removal as described below  
Prepare the new Cap USB.  
Carry out the Installation as described below.

#### REMOVAL

Insert the Front Opening Tool to release the Cap USB.

Gently lift up the Cap USB at 30-45 degree as shown in picture and pull to release it from its hole with fingers.

**Scrap! Not to be reused!**

#### INSTALLATION

Insert the Cap USB into its hole with fingers.



## Replacement: Cap USB

Push the pump of the Cap USB into the hole by using a Guitar Pick.



Press to secure its position.





## Replacement

### 4.13 Carrier Holder Bottom

*Follow the 3.1 – 3.4 Disassembly instructions!*

*Follow the 4.35 Removal instruction!*

Carry out the Removal as described below.

Prepare the new Carrier Holder Bottom.

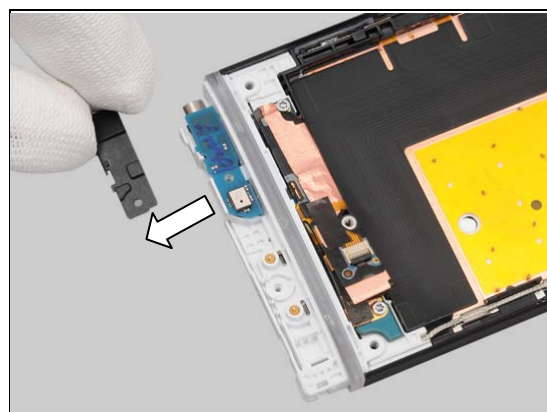
Carry out the Installation as described below.

*Follow the 4.35, 4.22 Installation instructions!*

*Follow the 5.4 – 5.7 Reassembly instructions!*

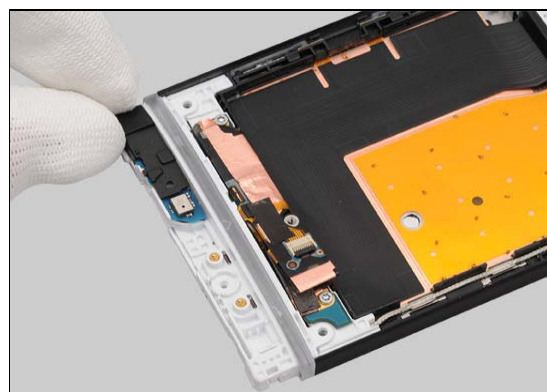
#### REMOVAL

Remove the Carrier Holder Bottom with your fingers.



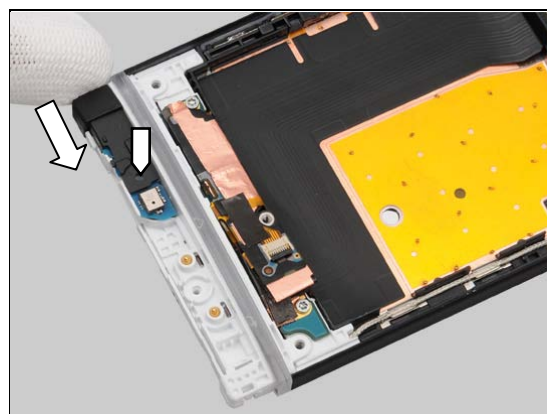
#### INSTALLATION

Place the Carrier Holder Bottom in the correct position.



Press to secure its position.

***The guiding hole must be aligned accurately between the Carrier Holder Bottom and the PBA Bottom!***





## Replacement

### 4.14 Carrier Holder Proximity Sensor

*Follow the 3.1, 3.3– 3.6 Disassembly instructions!*

*Follow the 4.29 Removal instructions!*

Carry out the Removal as described below.

Prepare the new Carrier Holder Proximity Sensor.

Carry out the Installation as described below.

*Follow the 4.29 Installation instructions!*

Follow the 5.2 –5.5, 5.7 Reassembly instructions!

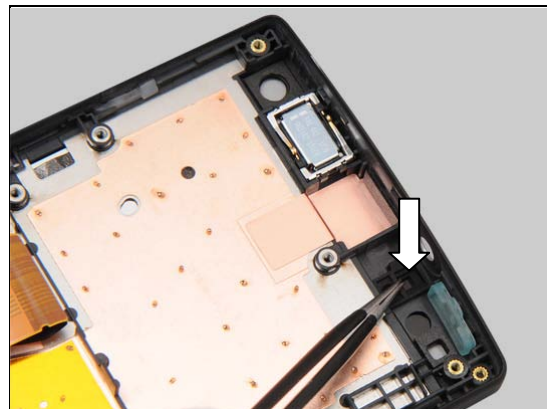
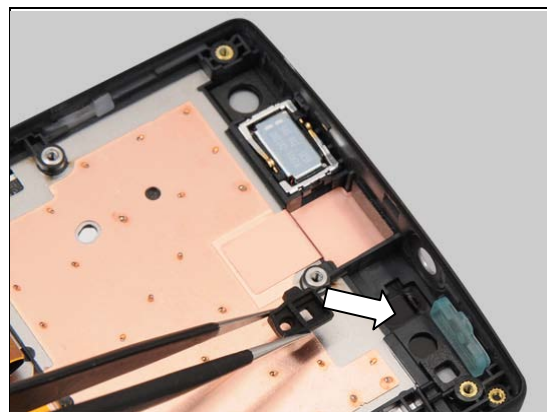
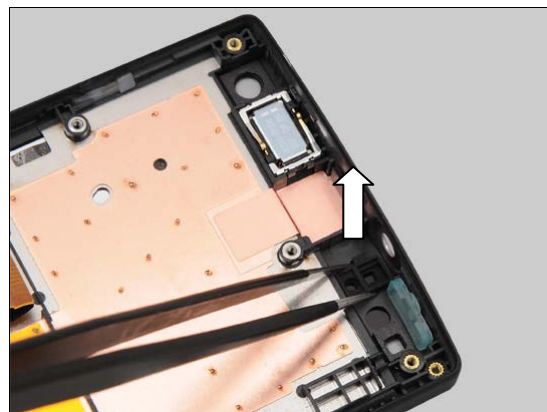
#### REMOVAL

Detach the Carrier Holder Proximity Sensor by using the Tweezers and remove it.

#### INSTALLATION

Place the Carrier Holder Proximity Sensor in the correct position.

Press to secure its position.



## Replacement

### 4.15 Carrier Vibrator

*Follow the 3.1 – 3.4 Disassembly instructions!*

*Follow the 4.35, 4.13, 4.37 Removal instructions!*

Carry out the Removal as described below.

Prepare the new Carrier Vibrator.

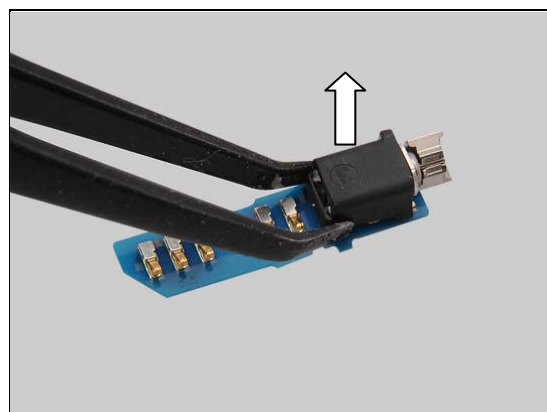
Carry out the Installation as described below.

*Follow the 4.35, 4.13, 4.37 Installation instructions!*

*Follow the 5.4 – 5.7 Reassembly instructions!*

#### REMOVAL

Detach the Carrier Vibrator by using the Flex Film Assembly Tool and remove it.

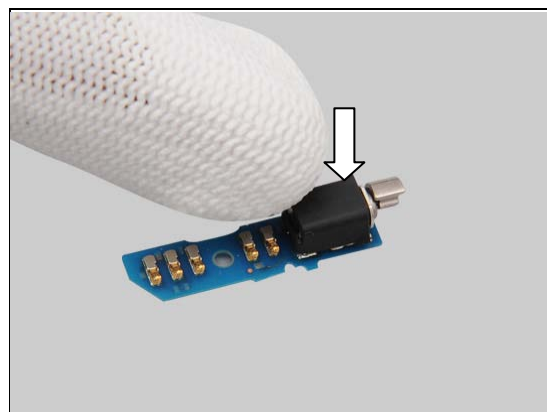


#### INSTALLATION

Place the new Carrier Vibrator in the correct position.



Press to secure its position.



## Replacement

### 4.16 Core Unit Label

*Follow the 3.1 Disassembly instructions!*

Carry out the Removal as described below.

Prepare the new Core Unit Label.

Carry out the Installation as described below.

*Follow the 5.7 Reassembly instructions!*

#### REMOVAL

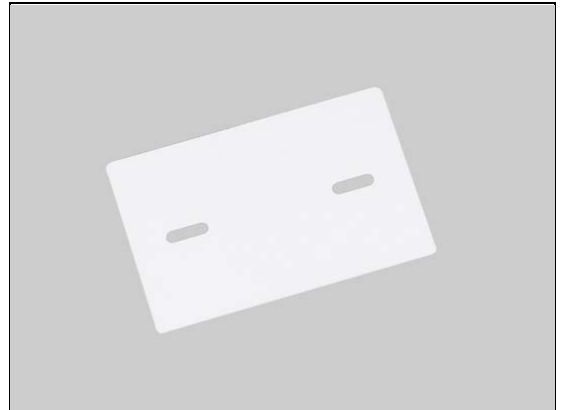
Read the old Label Core Unit and write the information into the 'LabelMake' program.

Carefully remove the Label by using the Flex Film Assembly Tool.

#### INSTALLATION

Check that the proper label format is loaded in the Zebra printer and write a new Label by using the 'LabelMake' software.

**One label only is allowed!**



## Replacement: Core Unit Lable

Press along the surface to make Label securely attached.



## Replacement

### 4.17 Cushion Camera 1

*Follow the 3.1, 3.3– 3.5 Disassembly instructions!*

Carry out the Removal as described below.

Prepare the new Cushion Camera 1.

Carry out the Installation as described below.

*Follow the 5.3 –5.5, 5.7 Reassembly instructions!*

#### REMOVAL

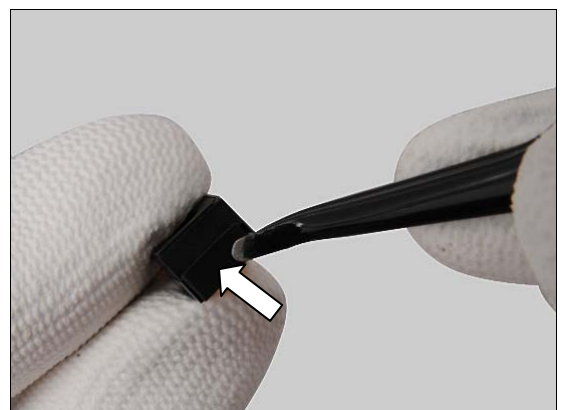
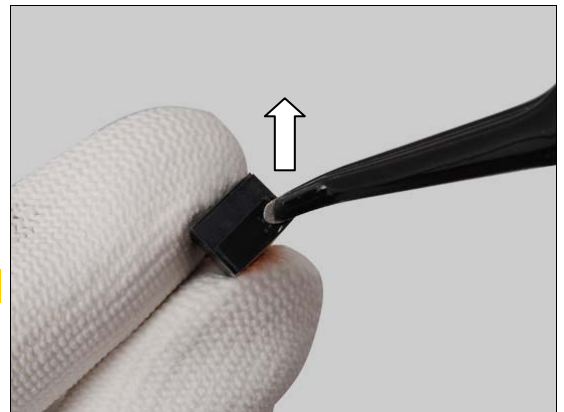
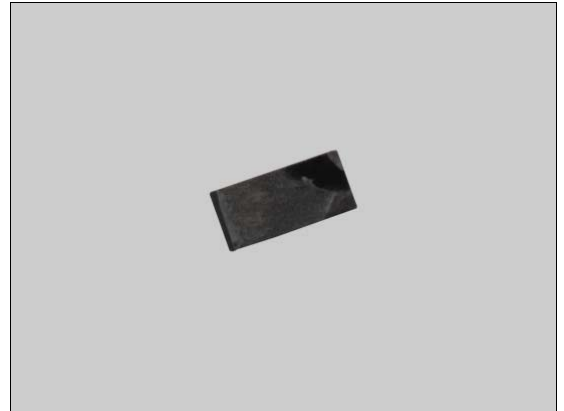
Peel off the Cushion Camera 1 by using the Flex Film Assembly Tool.

**Scrap! Not to be reused!**

#### INSTALLATION

Place the new Cushion Camera 1 in the correct position.

Press to secure its attachment.



## Replacement

### 4.18 Cushion of Speaker

*Follow the 3.1 Disassembly instructions!*

Carry out the Removal as described below.

Prepare the new Cushion of Speaker.

Carry out the Installation as described below.

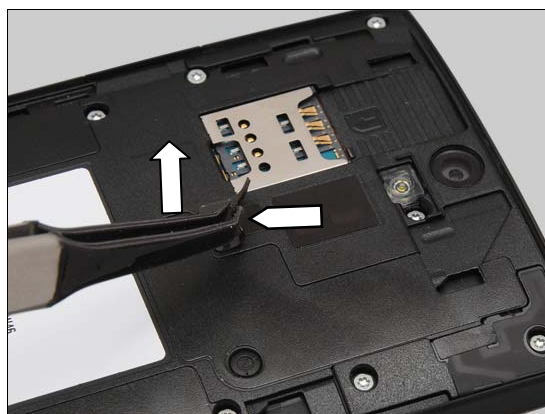
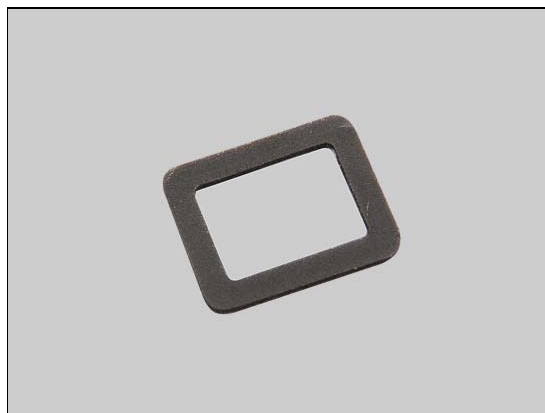
*Follow the 5.7 Reassembly instructions!*

#### REMOVAL

Peel off the Cushion of Speaker by using the Flex Film Assembly Tool.

**Scrap! Not to be reused!**

**Pay attention to the speaker net during remove the Cushion of Speaker as shown in the picture!**



Clean the remaining foil of the Cushion of Speaker on the Rear Frame Assy.



#### INSTALLATION

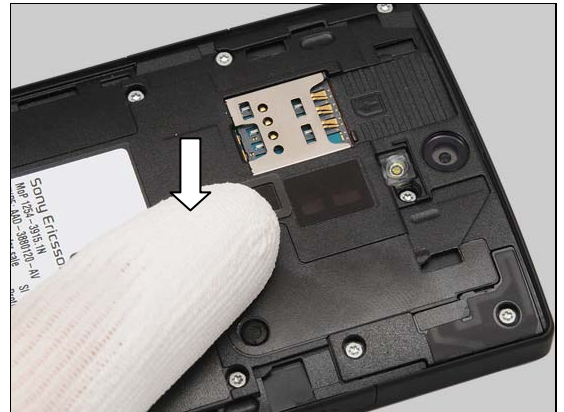
Place the new Cushion of Speaker in the correct position.





## Replacement: Cushion of Speaker

Press the Cushion of Speaker into its proper position.



## Replacement

### 4.19 Cushion Receiver

*Follow the 3.1, 3.3–3.6 Disassembly instructions!*

*Follow the 4.23 Removal instructions!*

Carry out the Removal as described below.

Prepare the new Cushion Receiver.

Carry out the Installation as described below.

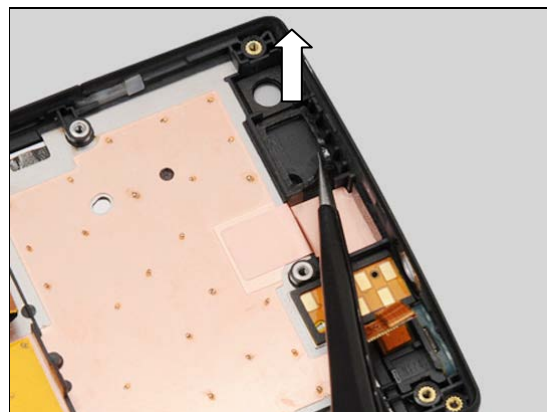
*Follow the 4.23 Installation instructions!*

*Follow the 5.2 –5.5, 5.7 Reassembly instructions!*

#### REMOVAL

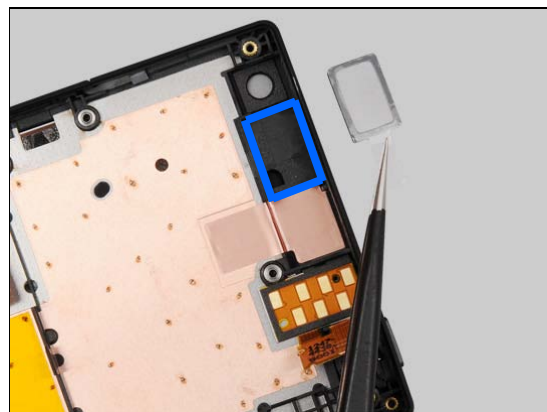
Peel off the Cushion Receiver by using the Tweezers.

**Scrap! Not to be reused!**

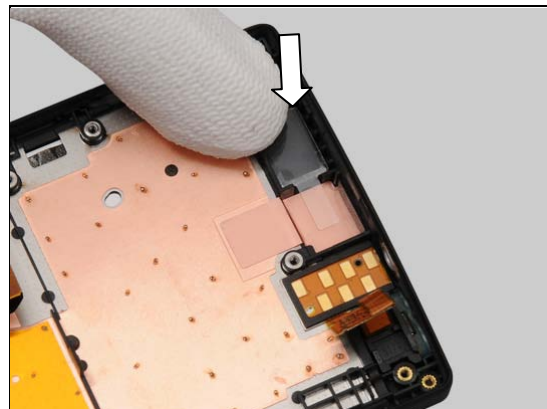


#### INSTALLATION

Place the Cushion Receiver in the correct position.



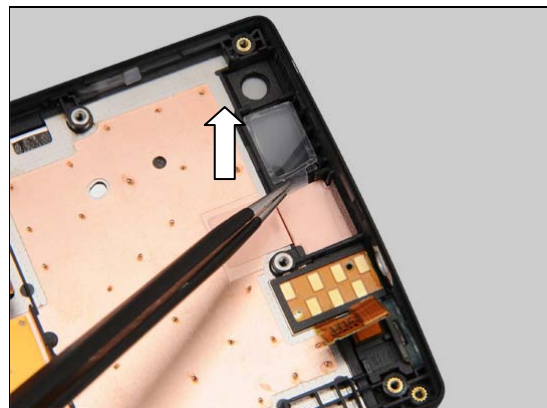
Press to secure its attachment.





## Replacement: Cushion Receiver

Peel off the protective film.



## Replacement

### 4.20 Cushion Speaker

*Follow the 3.1, 3.3– 3.6 Disassembly instructions!*

Carry out the Removal as described below.

Prepare the new Cushion Speaker.

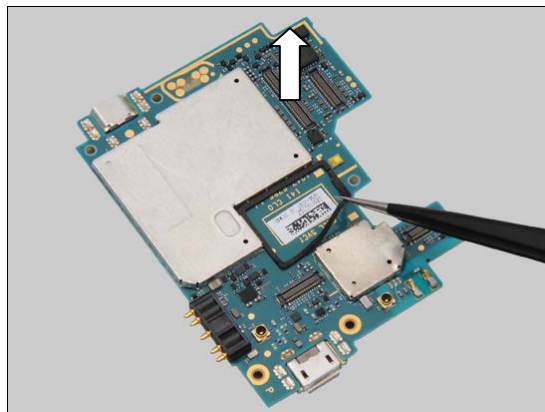
Carry out the Installation as described below.

*Follow the 5.2 –5.5, 5.7 Reassembly instructions!*

#### REMOVAL

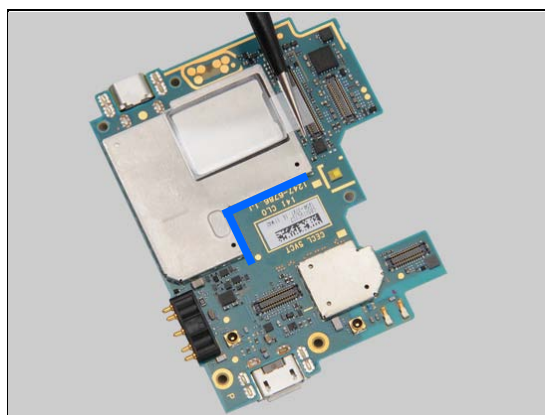
Peel off the Cushion Speaker by using the Tweezers.

**Scrap! Not to be reused!**

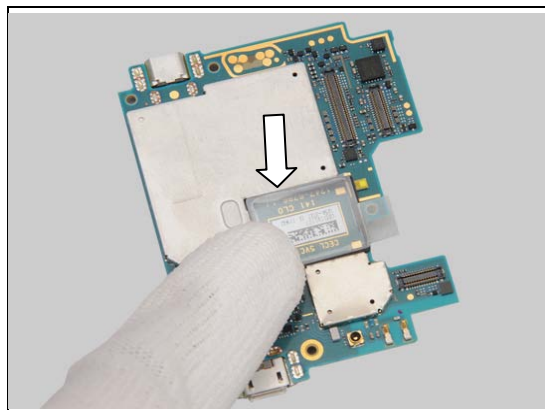


#### INSTALLATION

Place the Cushion Speaker aligning the Shield Can BB B guide lines as shown in the picture.

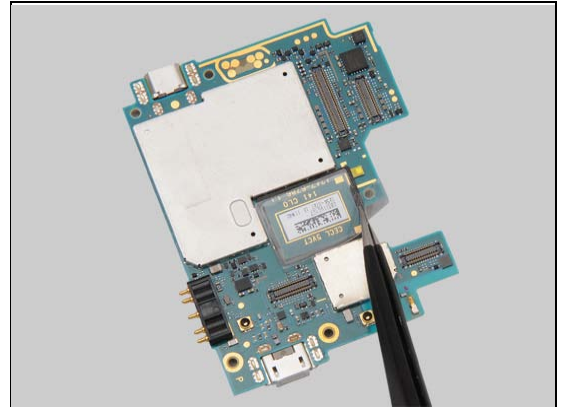


Press to secure its attachment.



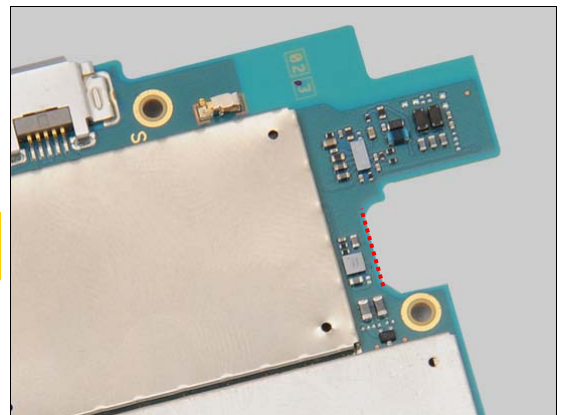
## Replacement: Cushion Speaker

Peel off the protective film.



Turn over the main PBA to make sure the Cushion Speaker proper assembly.

**Cushion Speaker should be within marked PBA guiding area! PBA overhang is not allowed!**



## Replacement

### 4.21 Cushion Sub PBA

*Follow the 3.1, 3.3, 3.4 Disassembly instructions!*

Carry out the Removal as described below.

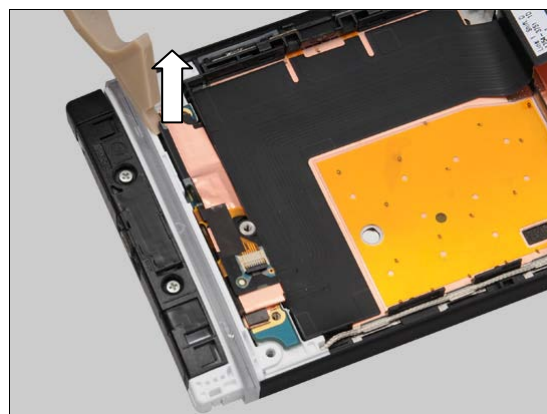
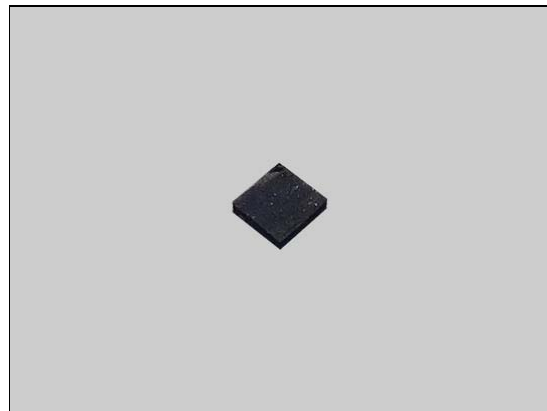
Prepare the new Cushion Sub PBA.

Carry out the Installation as described below.

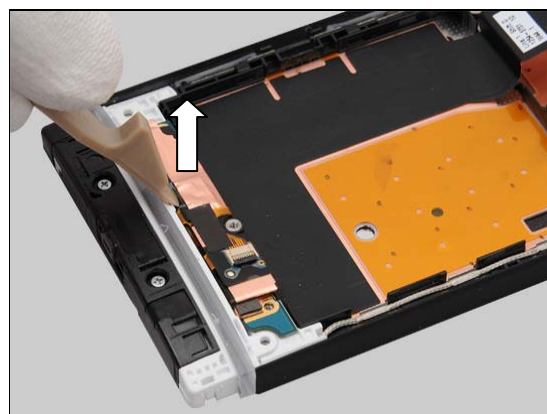
*Follow the 5.4, 5.5, 5.7 Reassembly instructions!*

#### REMOVAL

Unsnap the LCD BtB connectors by using the Front Opening Tool.



Unsnap the touch panel BtB connectors by using the Front Opening Tool.



Peel off the Cushion Sub PBA by using the Flex Film Assembly Tool.

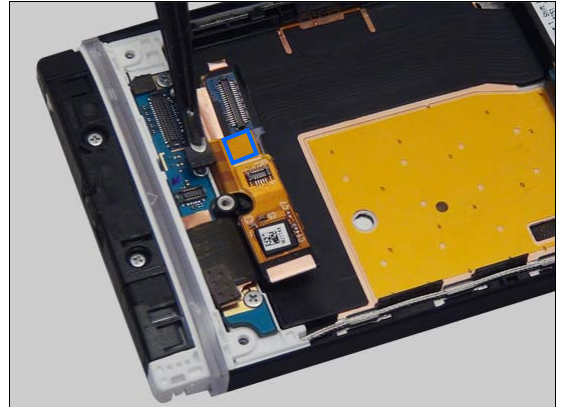
**Scrap! Not to be reused!**



## Replacement: Cushion Sub PBA

### INSTALLATION

Place the new Cushion Sub PBA aligning the guiding line as shown in the picture.



Press to secure its attachment.



## Replacement

### 4.22 Cushion Vib

*Follow the 3.1 –3.4 Disassembly instructions!*

*Follow the 4.35, 4.13 Removal instructions!*

Carry out the Removal as described below.

Prepare the new Cushion Vib.

Carry out the Installation as described below.

*Follow the 4.35, 4.13 Installation instructions!*

*Follow the 5.4 – 5.7 Reassembly instructions!*

#### REMOVAL

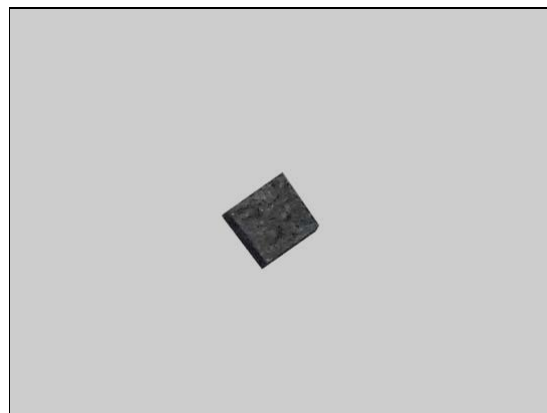
Peel off the Cushion Vib by using the Flex Film Assembly Tool.

**Scrap! Not to be reused!**

#### INSTALLATION

Place the Cushion Vib in the correct position.

Press to secure its attachment.





## Replacement

### 4.23 Ear Speaker

*Follow the 3.1, 3.3–3.6 Disassembly instructions!*

*Follow the 4.19 Removal instructions*

Carry out the Removal as described below.

Prepare the new Ear Speaker.

Carry out the Installation as described below.

*Follow the 4.19 Installation instructions*

*Follow the 5.2 –5.5, 5.7 Reassembly instructions!*

#### REMOVAL

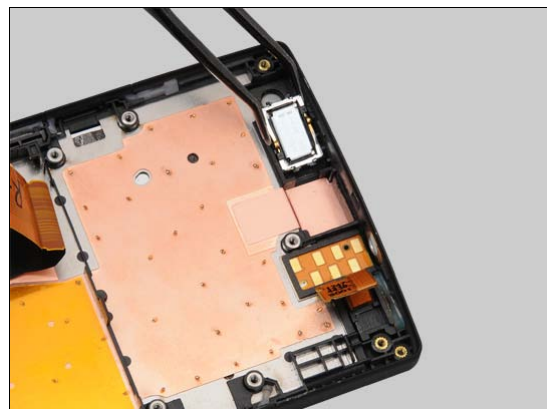
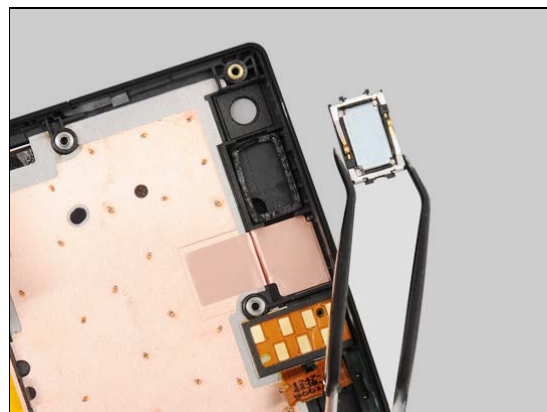
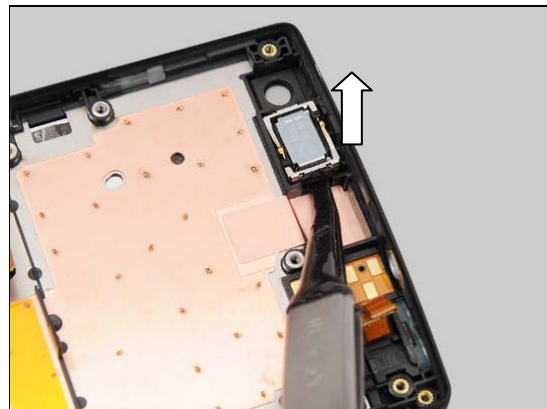
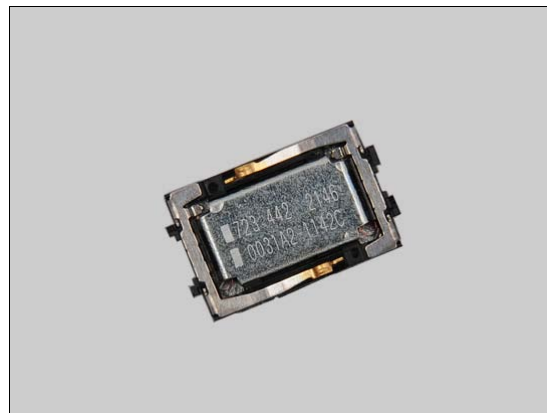
Insert the Flex Film Assembly Tool underneath and lift up to detach the Ear Speaker.

**Do not touch the contact pins!**

Remove the Ear Speaker by using the Flex Film Assembly Tool.

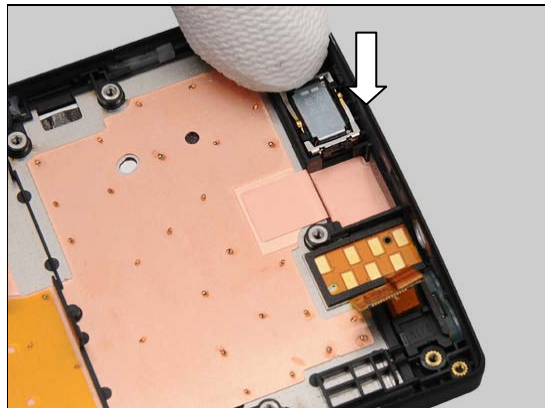
#### INSTALLATION

Clean the remained Cushion Receiver and place the new Ear Speaker in the correct position.



## Replacement: Ear Speaker

Press to secure its attachment.





## Replacement

### 4.24 Foil Adhesive Audio Jack

*Follow the 3.1, 3.3, 3.4 Disassembly instructions!*

*Follow the 4.9 Removal instruction.*

Carry out the Removal as described below.

Prepare the new Foil Adhesive Audio Jack.

Carry out the Installation as described below.

*Follow the 4.9 Installation instruction.*

*Follow the 5.4, 5.5, 5.7 Reassembly instructions!*

#### REMOVAL

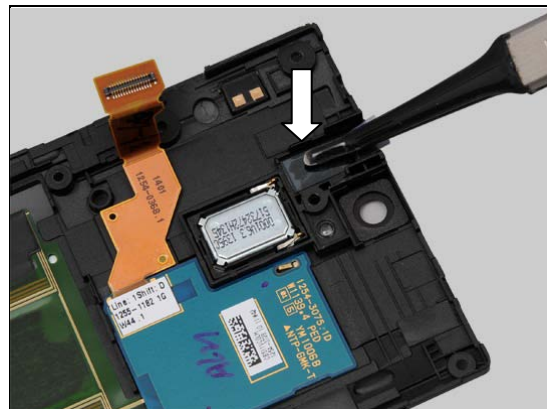
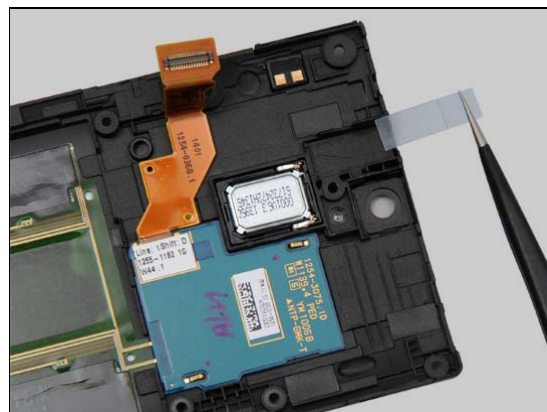
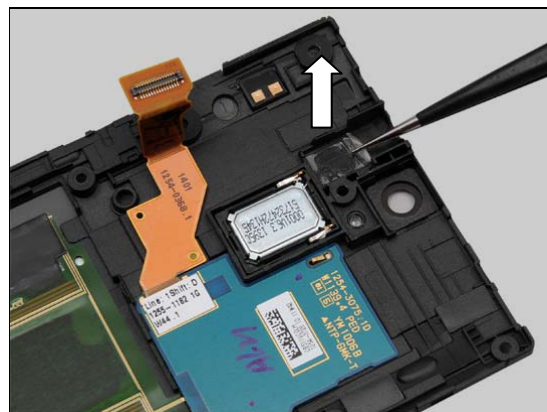
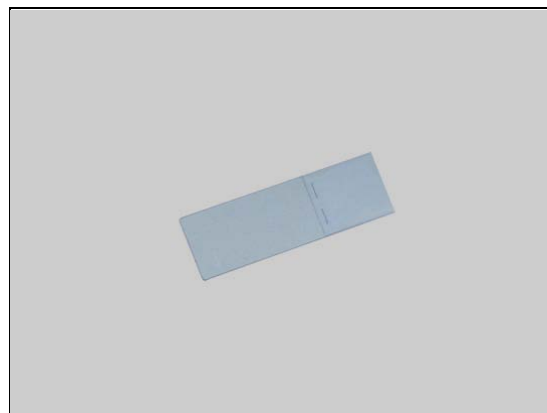
Peel off the Foil Adhesive Audio Jack by using the Tweezers.

**Scrap! Not to be reused!**

#### INSTALLATION

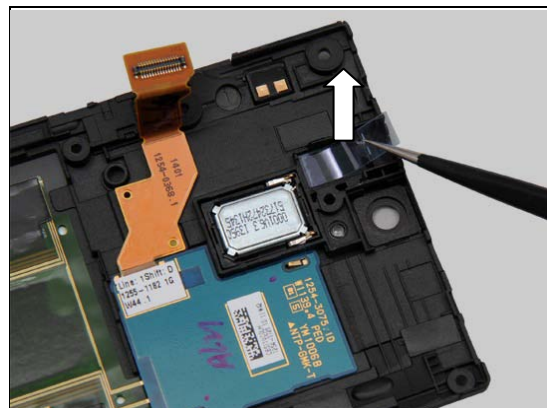
Place the new Foil Adhesive Audio Jack in the correct position.

Press to secure its attachment.



## Replacement: Foil Adhesive Audio Jack

Peel off the protective film.



## Replacement

### 4.25 Foil Adhesive GPS Ant

*Follow the 3.1, 3.3, 3.4 Disassembly instructions!*

*Follow the 4.8 Removal instruction.*

Carry out the Removal as described below.

Prepare the new Foil Adhesive GPS Ant.

Carry out the Installation as described below.

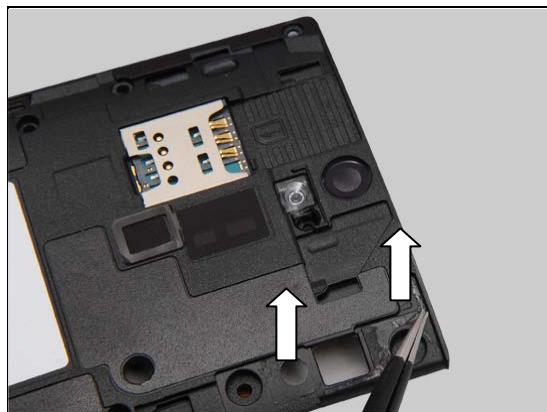
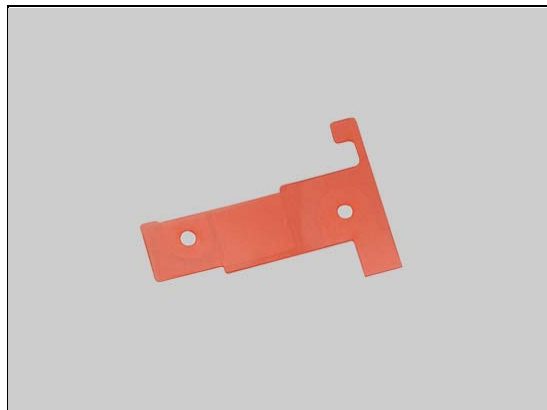
*Follow the 4.8 Installation instruction.*

*Follow the 5.4, 5.5, 5.7 Reassembly instructions!*

#### REMOVAL

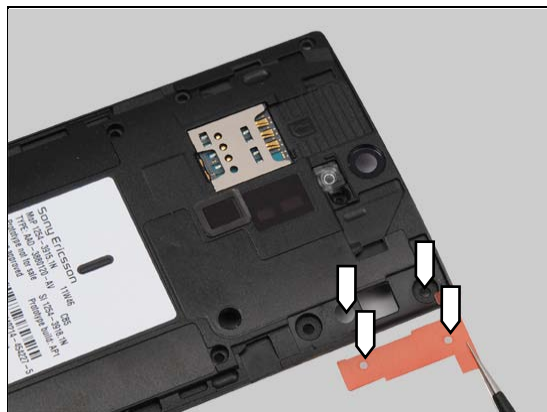
Peel off the Foil Adhesive GPS Ant by using the Tweezers.

**Scrap! Not to be reused!**



#### INSTALLATION

Place the new Foil Adhesive GPS Ant in the correct position.



Press to secure its attachment.



## **Replacement: Foil Adhesive GPS Ant**

Peel off the protective film.



## Replacement

### 4.26 Foil Adhesive NFC PBA

*Follow the 3.1, 3.3, 3.4 Disassembly instructions!*

*Follow the 4.38 Removal instruction.*

Carry out the Removal as described below.

Prepare the new Foil Adhesive NFC PBA.

Carry out the Installation as described below.

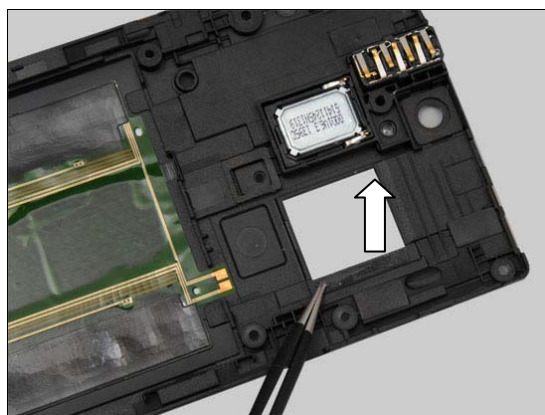
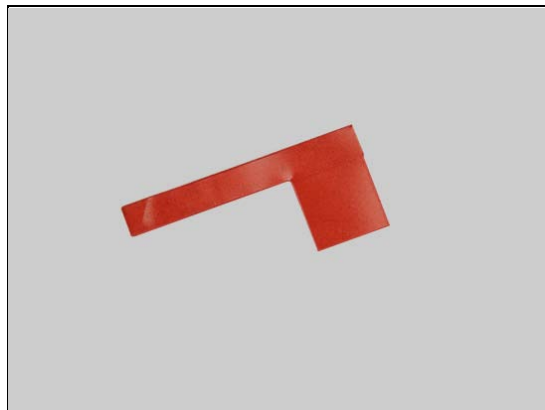
*Follow the 4.38 Installation instruction.*

*Follow the 5.4, 5.5, 5.7 Reassembly instructions!*

#### REMOVAL

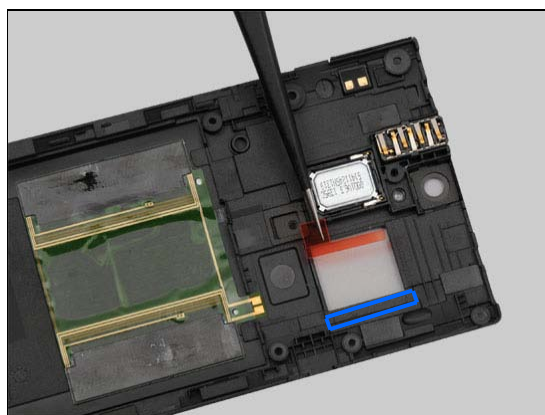
Peel off the Foil Adhesive NFC PBA by using the Tweezers.

**Scrap! Not to be reused!**

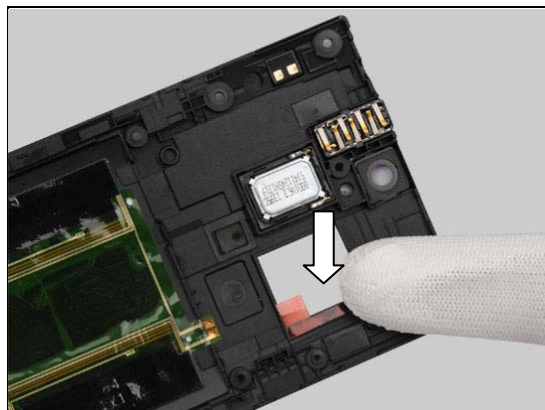


#### INSTALLATION

Place the new Foil Adhesive NFC PBA in the correct position as shown in the picture.

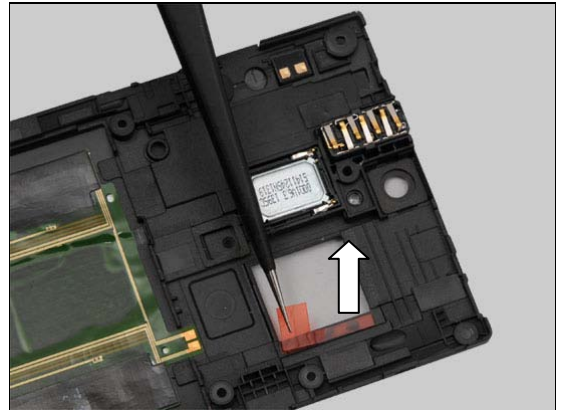


Press to secure its attachment.



## **Replacement: Foil Adhesive NFC PBA**

Peel off the protective film.





## Replacement

### 4.27 Foil Adhesive Speaker

*Follow the 3.1, 3.3, 3.4 Disassembly instructions!*

*Follow the 4.34 Removal instructions.*

Carry out the Removal as described below.

Prepare the new Foil Adhesive Speaker.

Carry out the Installation as described below.

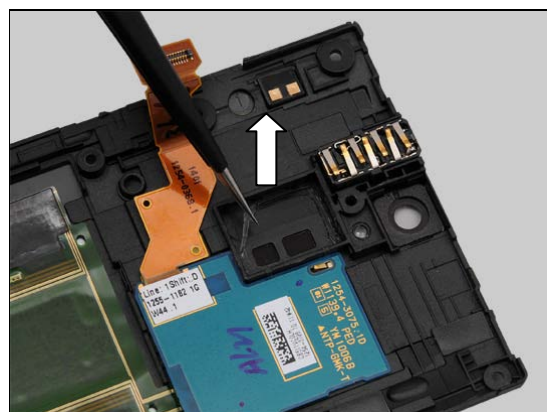
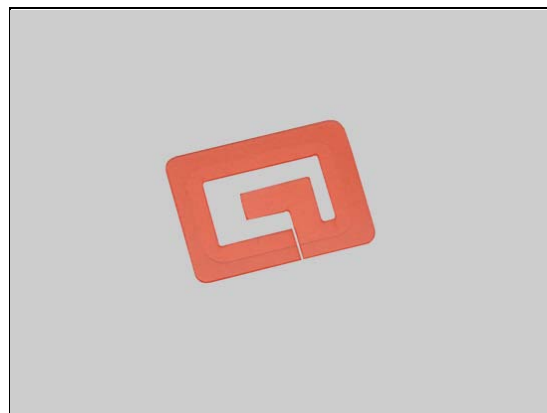
*Follow the 4.34 Installation instructions.*

*Follow the 5.4, 5.5, 5.7 Reassembly instructions!*

#### REMOVAL

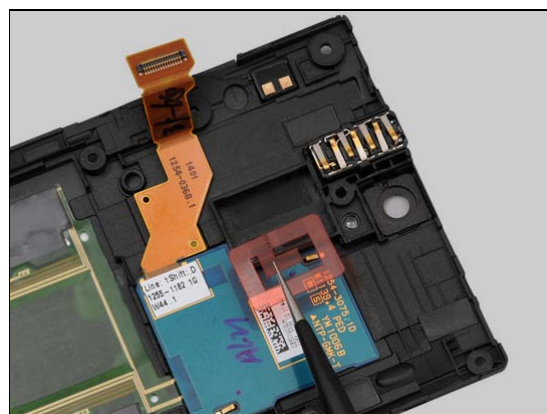
Peel off the Foil Adhesive Speaker by using the Tweezers.

**Scrap! Not to be reused!**

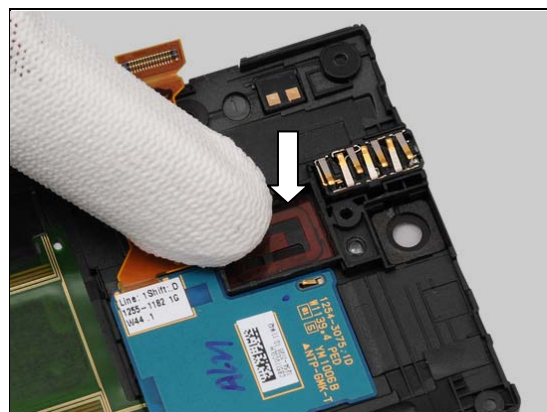


#### INSTALLATION

Place the new Foil Adhesive Speaker in the correct position.



Press to secure its attachment.



## Replacement: Foil Adhesive Speaker

Peel off the protective film.



## Replacement

### 4.28 Foil Adhesive Transparent Front

*Follow the 3.1, 3.3 – 3.7 Disassembly instructions!*

Carry out the Removal as described below.

Prepare the new Foil Adhesive Speaker.

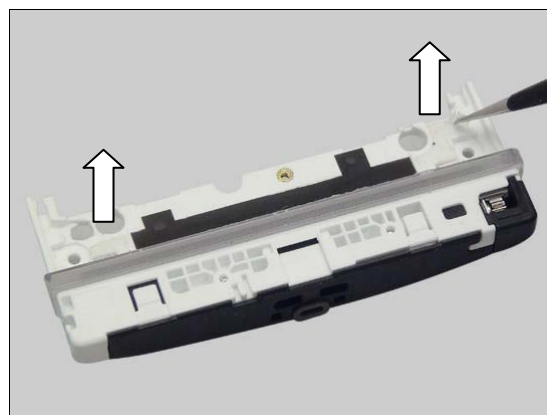
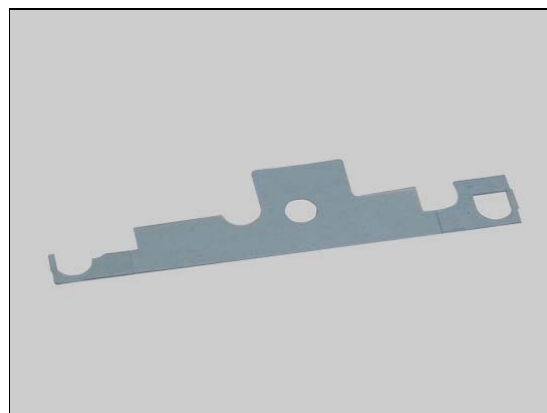
Carry out the Installation as described below.

*Follow the 5.1 –5.5, 5.7 Reassembly instructions!*

#### REMOVAL

Peel off the Foil Adhesive Transparent Front by using the Tweezers.

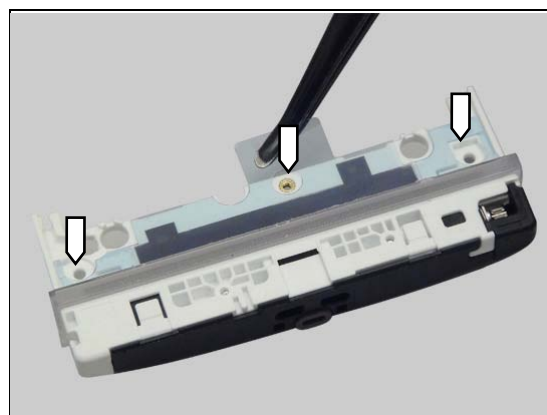
**Scrap! Not to be reused!**



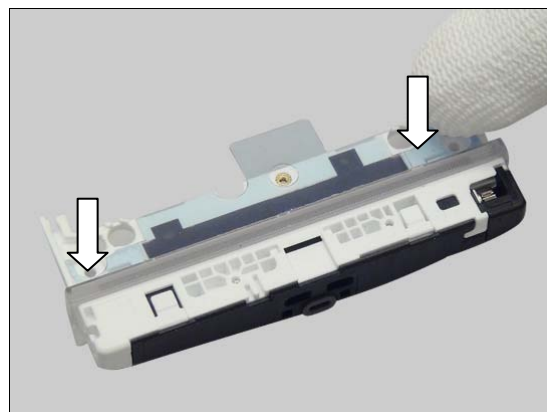
#### INSTALLATION

Place the new Foil Adhesive Transparent Front in the correct position.

**The holes must be aligned between the Foil Adhesive Transparent Front and the Cover Transparent Assy!**

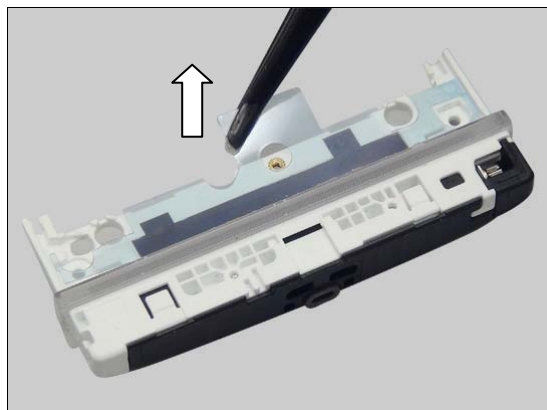


Press to secure its attachment.



## Replacement: Foil Adhesive Transparent Front

Peel off the protective film.



## Replacement

### 4.29 FPC Jack Assy

*Follow the 3.1, 3.3– 3.6 Disassembly instructions!*

Carry out the Removal as described below.

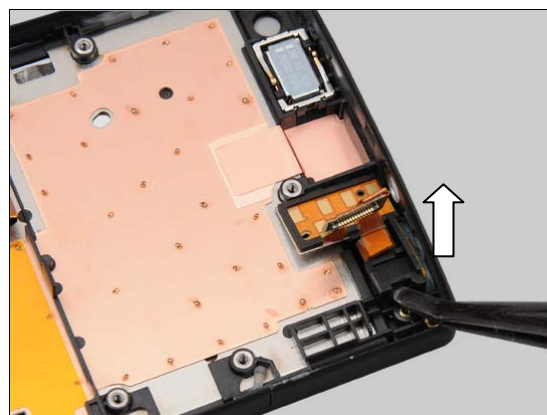
Prepare the new FPC Jack Assy.

Carry out the Installation as described below.

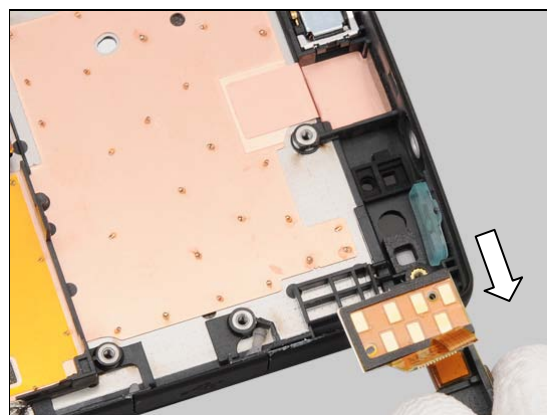
*Follow the 5.2 –5.5, 5.7 Reassembly instructions!*

#### REMOVAL

Insert the Flex Film Assembly Tool underneath and lift up to detach the FPC Jack Assy.

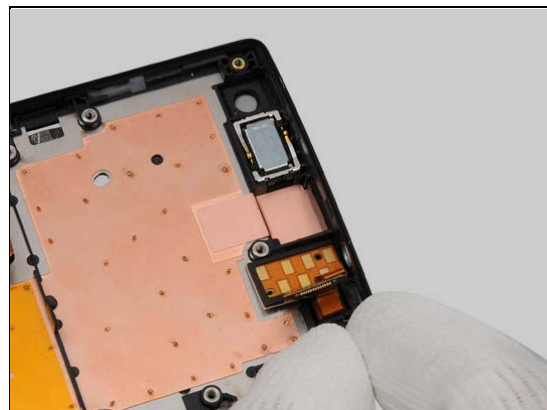


Remove the FPC Jack Assy with your fingers.



#### INSTALLATION

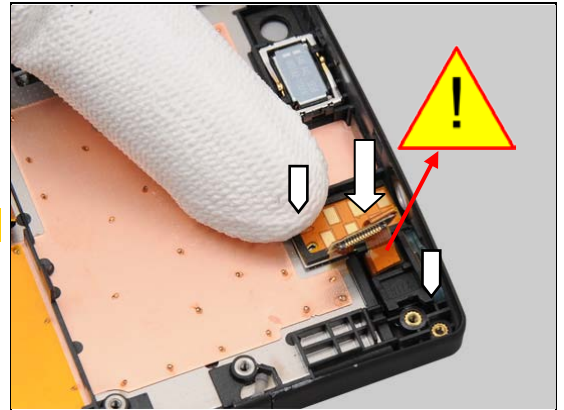
Place the new FPC Jack Assy in the correct position.



## Replacement: FPC Jack Assy

Press to secure its position.

**Do not touch the FPC area!**





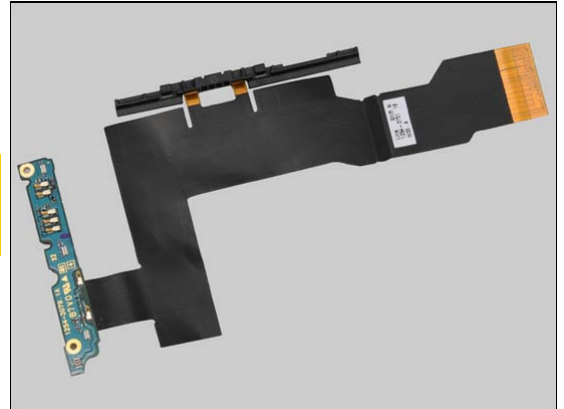
## Replacement

### 4.30 FPC Main Assy

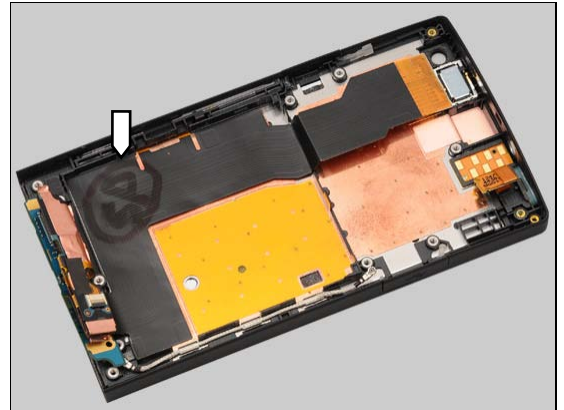
*Follow the 3.1, 3.3 – 3.7 Disassembly instructions!*

**Check the FPC Main Assy, if it is marked or damaged, follow the 4.30,1 replacement instruction; if it is unmarked, follow the 4.30.2 replacement instruction.**

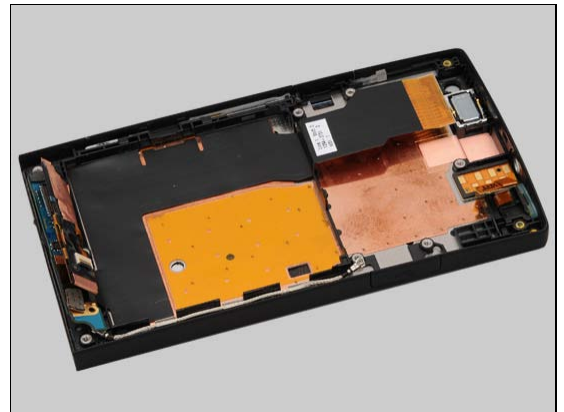
*Follow the 5.1 – 5.5, 5.7 Reassembly instructions!*



The FPC Main Assy (Marked) is as shown in the picture.



The FPC Main Assy (Unmarked) is as shown in the picture.



## Replacement: FPC Main Assy

### 4.30.1 FPC Main Assy (Marked)

Carry out the Removal as described below.

**Scrap! Not to be reused!**

Prepare the new FPC Main Assy.

Carry out the Installation as described below.

Follow the 4.41 Installation instructions.

#### REMOVAL

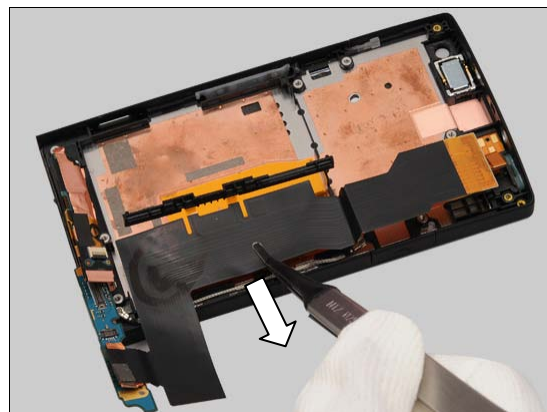
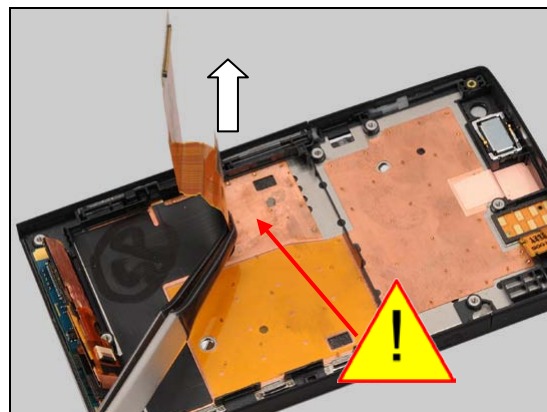
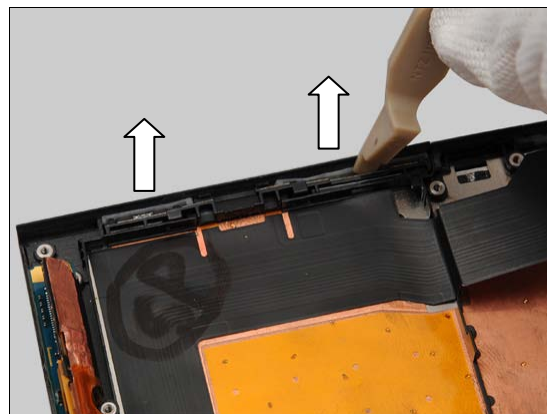
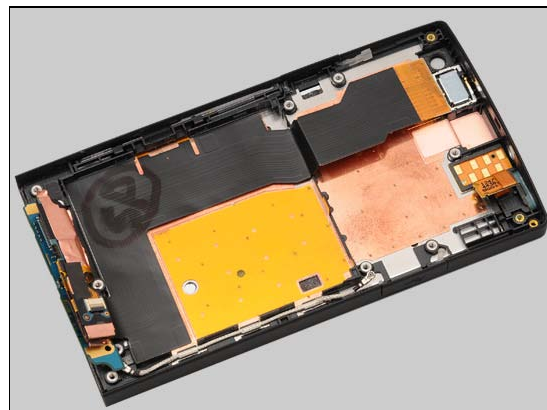
Insert the Front Opening Tool to detach the key push switch part on the FPC Main Assy.

Detach the FPC Main Assy by using the Flex Film Assembly Tool.

**Don't scratch the foil under the FPC Main Assy!**

Remove the FPC Main Assy.

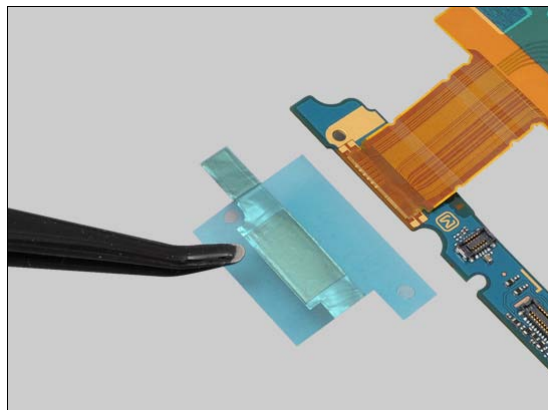
**Scrap! Not to be reused!**



## Replacement: FPC Main Assy

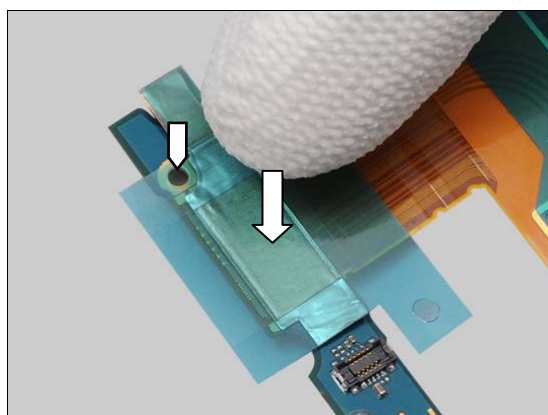
### INSTALLATION

Place the new Sheet ACF Relay in the correct position.

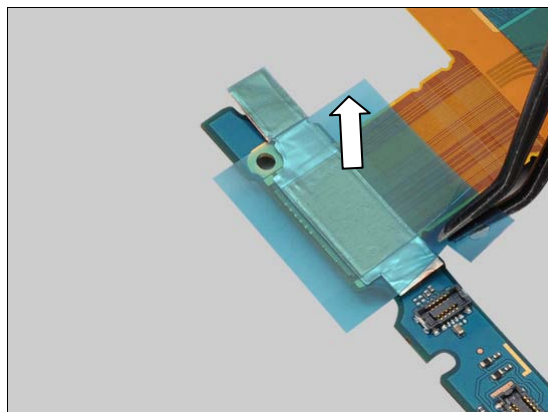


Press to secure its attachment.

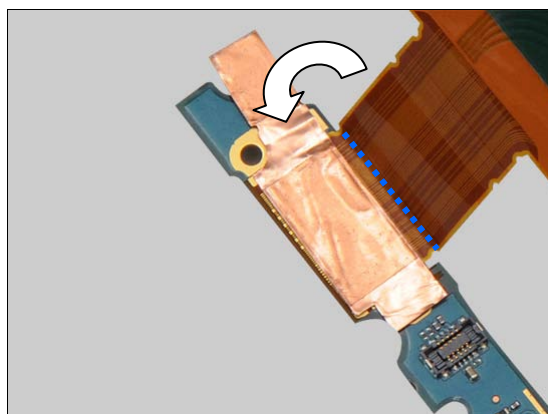
***The guiding hole must be aligned accurately between the Sheet ACF Relay and the PBA of the FPC Main Assy!***



Peel off the protective film.

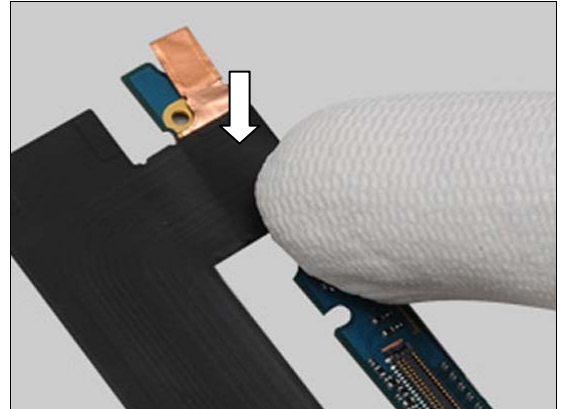


Pre-bend the FPC Main by the Guide line as shown in the picture.

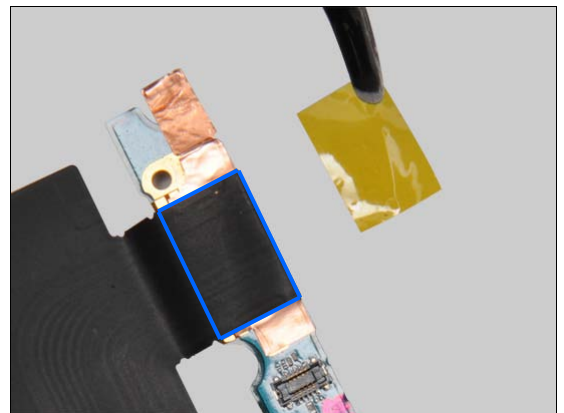


## Replacement: FPC Main Assy

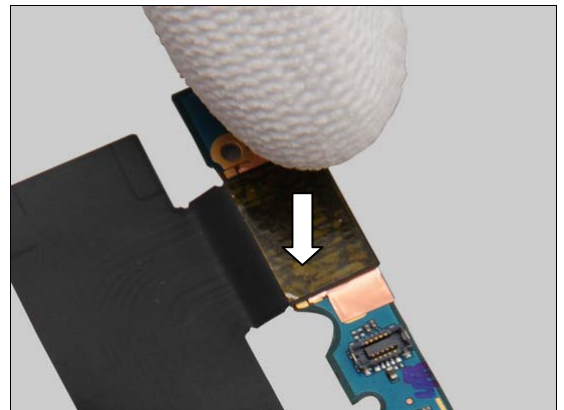
Press to secure its attachment.



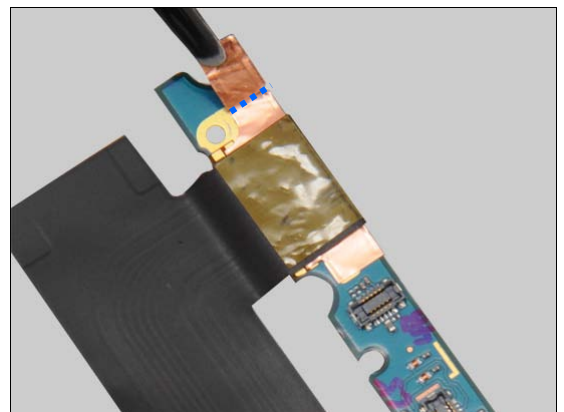
Place the new Sheet Relay FPC in the correct position



Press to secure its attachment.

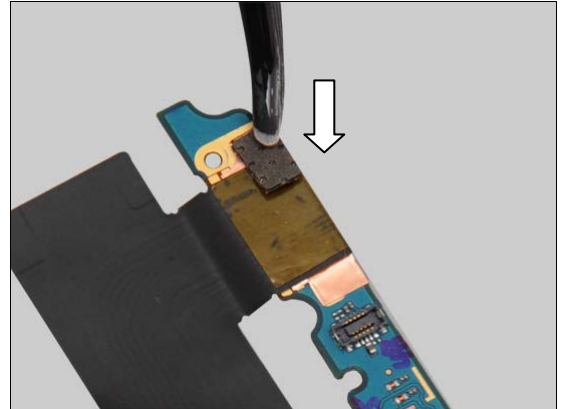


Pre-bend the Sheet ACF Relay by the Guide line as shown in the picture.

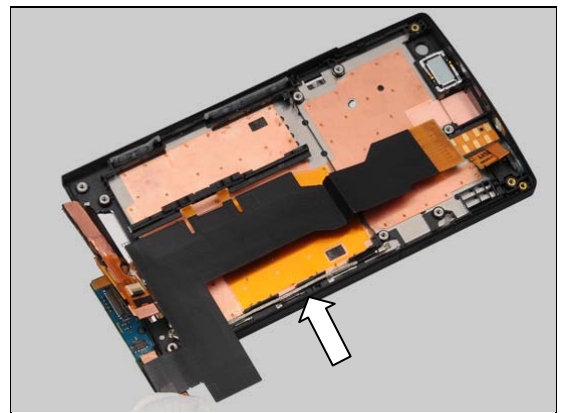


## Replacement: FPC Main Assy

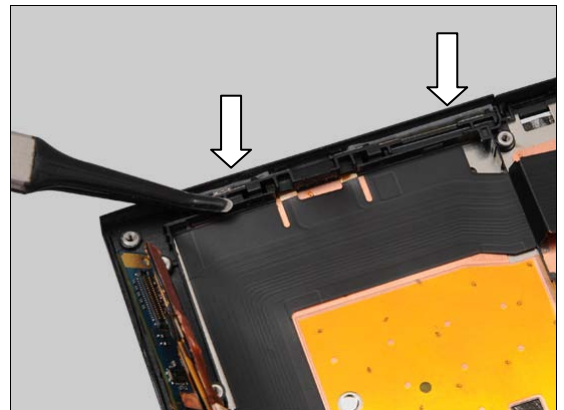
Press the Sheet ACF Relay to secure its attachment.



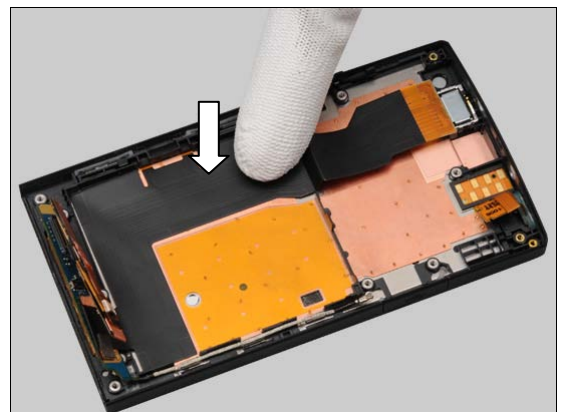
Secure the FPC Main Assy in the correct position, by sliding it under LCD FPC slot as shown in picture!



Press to secure key push switch part position by using the Flex Film Assembly Tool.



Press along to secure its attachment.





## Replacement: FPC Main Assy

### 4.30.2 FPC Main Assy (Unmarked)

Carry out the Removal as described below.  
Reuse the FPC Main Assy (Unmarked).  
Carry out the Installation as described below.

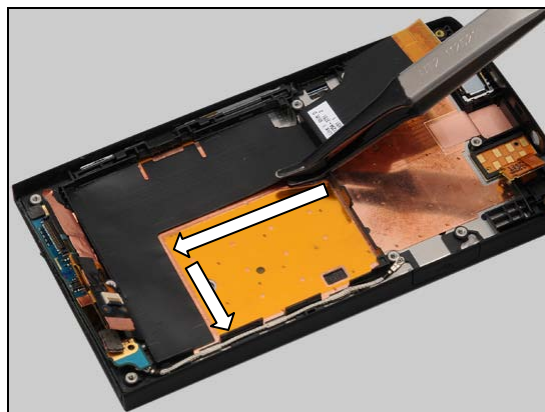
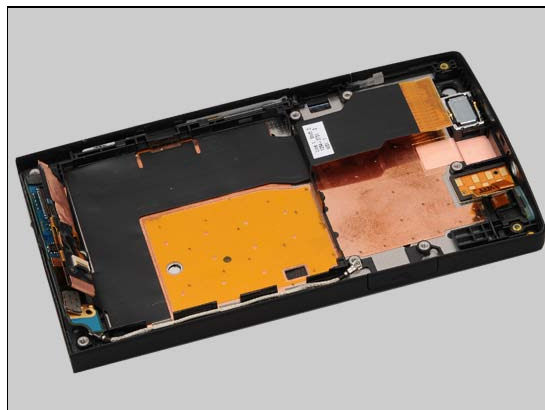
#### REMOVAL

Set the oven temperature at approximate 60°C.

**The oven temperature must below 60°C!**

Place the Cover Front Assy into the oven with FPC Main Assy for 60 minutes.

Slide the edge of the FPC gently to release the foil under the FPC by using the Flex Film Assembly Tool.

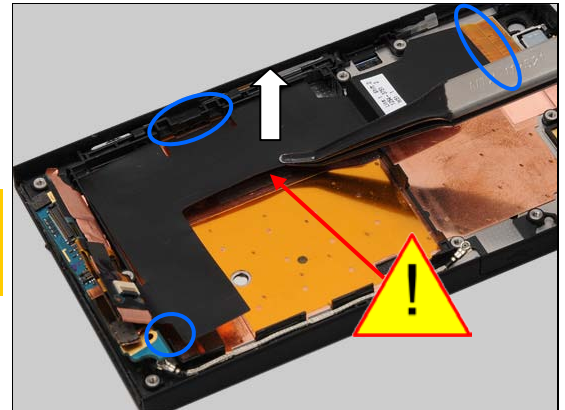




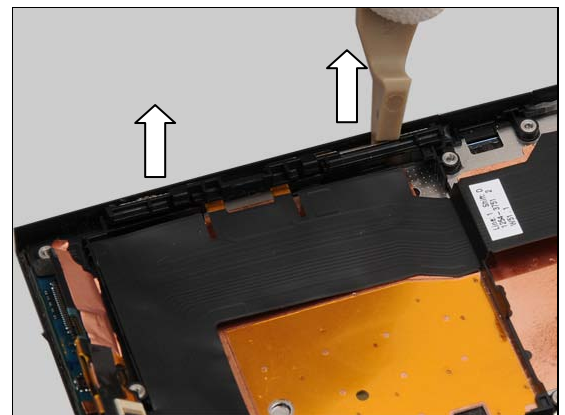
## Replacement: FPC Main Assy

Detach the FPC Main Assy by using the Flex Film Assembly Tool.

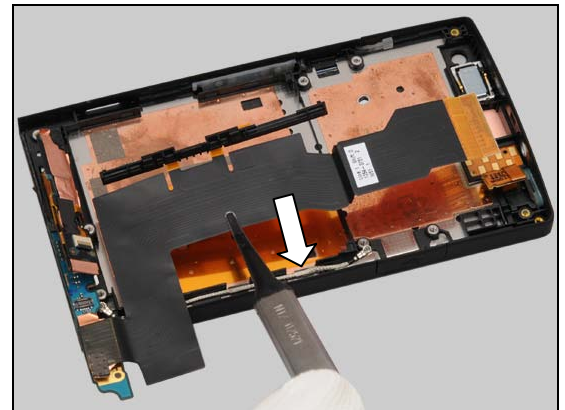
**Don't scratch the foil under the FPC Main Assy!**  
**Don't damage the delicate points as indicated by the blue circles!**



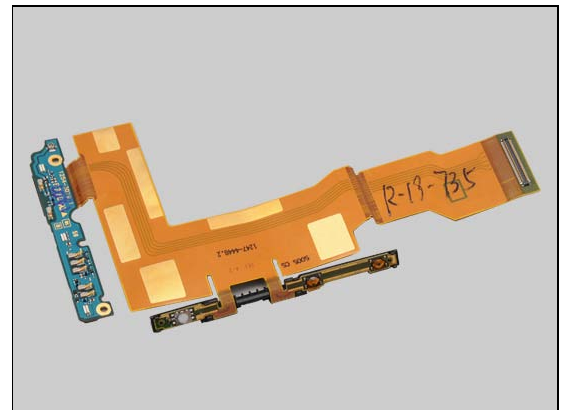
Insert the Front Opening Tool to detach the key push switch part on the FPC Main Assy.



Remove the FPC Main Assy.



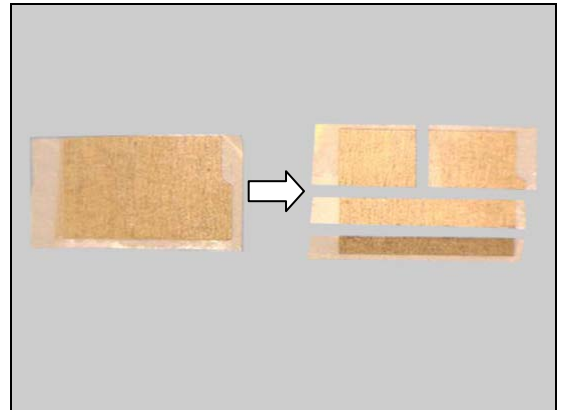
Clean the surplus on the backside of the FPC Main Assy before it can be reused.



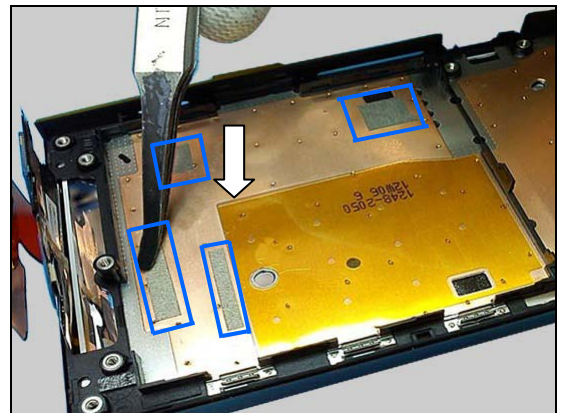
## Replacement: FPC Main Assy

### INSTALLATION

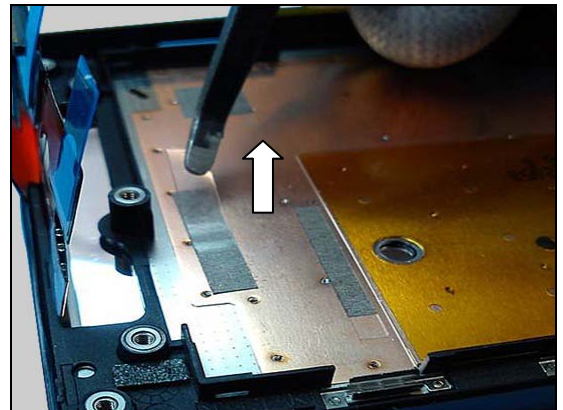
Cut the Foil Adhesive Conductive in four parts as shown in the picture.



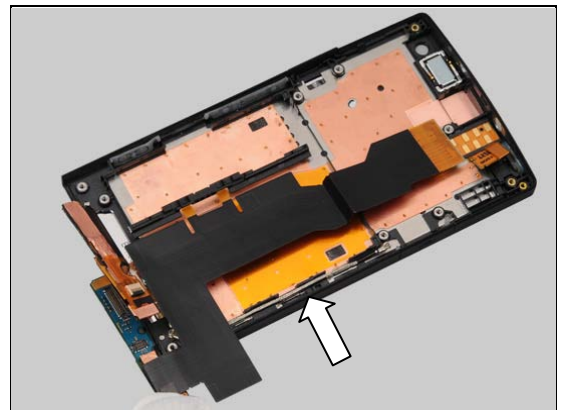
Place the four parts of Foil Adhesive Conductive in the correct position as shown in the picture and press into its proper position.



Peel off the protection films of the four parts of Foil Adhesive Conductive.

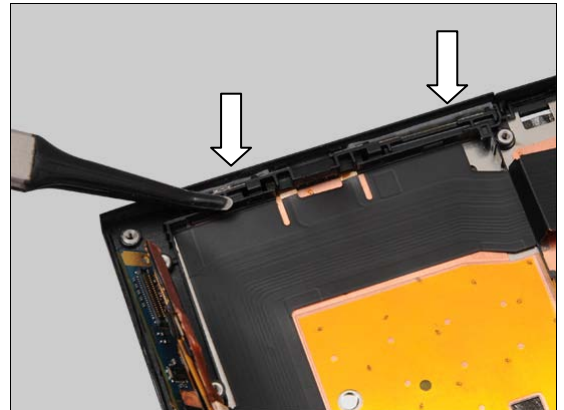


Secure the FPC Main Assy in the correct position, by sliding it under LCD FPC slot as shown in picture!

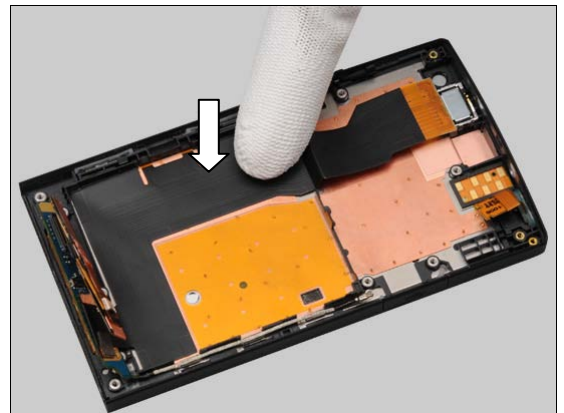


## Replacement: FPC Main Assy

Press to secure key push switch part position by using the Flex Film Assembly Tool.

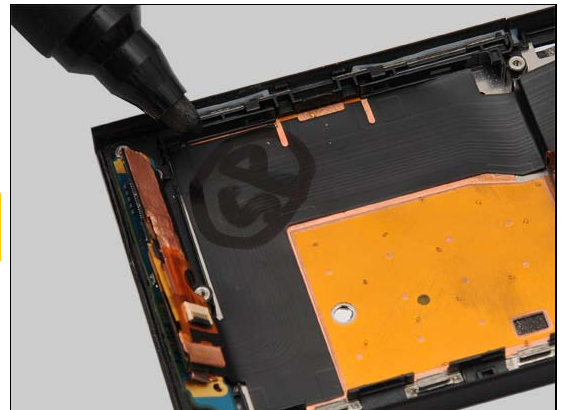


Press along to secure its attachment.



Mark "SP" on FPC Main Assy as shown in the picture.

**Note: It is very important to mark "SP" on the reused FPC Main Assy!**



## Replacement

### 4.31 Key Camera

*Follow the 3.1, 3.3 – 3.7 Disassembly instructions!*

*Follow the 4.30 Removal instructions!*

Carry out the Removal as described below.

Prepare the new Key Camera.

Carry out the Installation as described below.

*Follow the 4.30 Installation instructions!*

*Follow the 5.1 –5.5, 5.7 Reassembly instructions!*

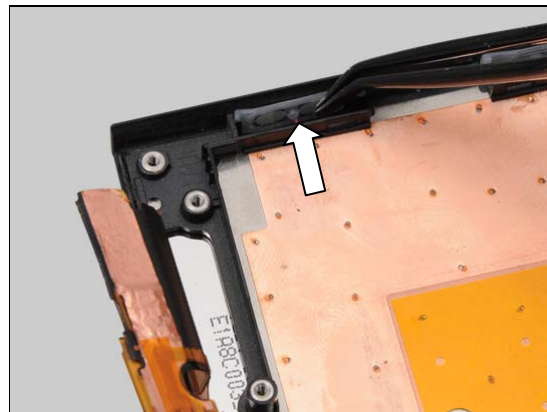
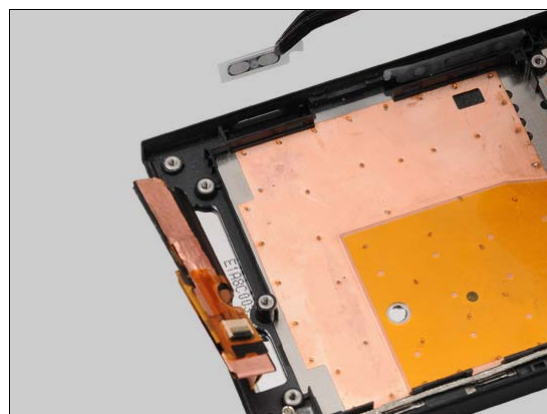
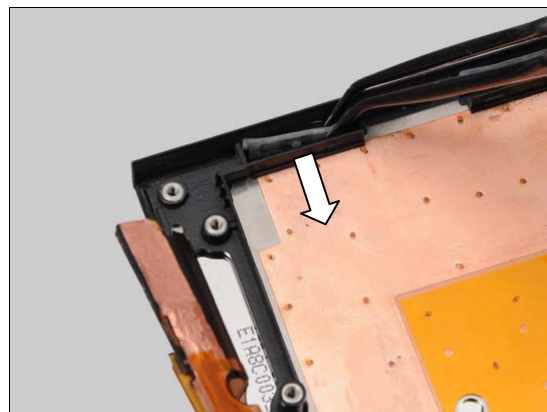
#### REMOVAL

Detach the Key Camera by using the Flex Film Assembly Tool and remove it.

#### INSTALLATION

Place the new Key Camera with proper direction into the slot.

Press to secure its position.





## Replacement

### 4.32 Key On/Off

*Follow the 3.1, 3.3 – 3.6 Disassembly instructions!*

*Follow the 4.29 Removal instructions!*

Carry out the Removal as described below.

Prepare the new Key On/Off.

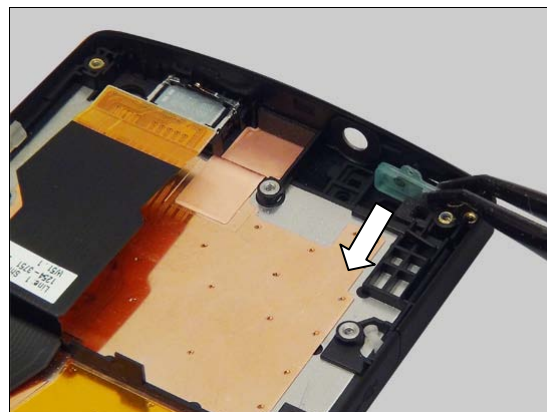
Carry out the Installation as described below.

*Follow the 4.29 Installation instructions!*

*Follow the 5.2 –5.5, 5.7 Reassembly instructions!*

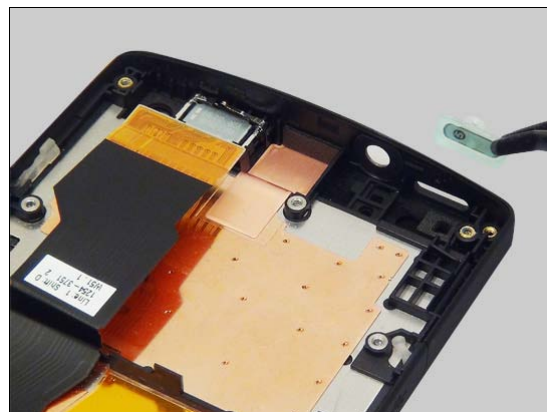
#### REMOVAL

Detach the Key On/Off by using the Flex Film Assembly Tool and remove it.

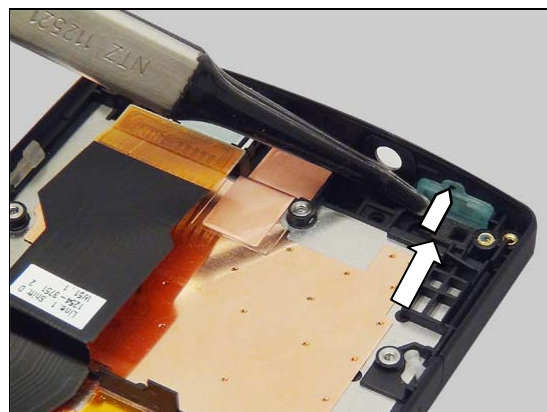


#### INSTALLATION

Place the new Key On/Off with proper direction into the slot.



Press to secure its position.



## Replacement

### 4.33 Key Volume

*Follow the 3.1, 3.3 – 3.7 Disassembly instructions!*

*Follow the 4.30 Removal instructions!*

Carry out the Removal as described below.

Prepare the new Key Volume.

Carry out the Installation as described below.

*Follow the 4.30 Installation instructions!*

*Follow the 5.1 –5.5, 5.7 Reassembly instructions!*

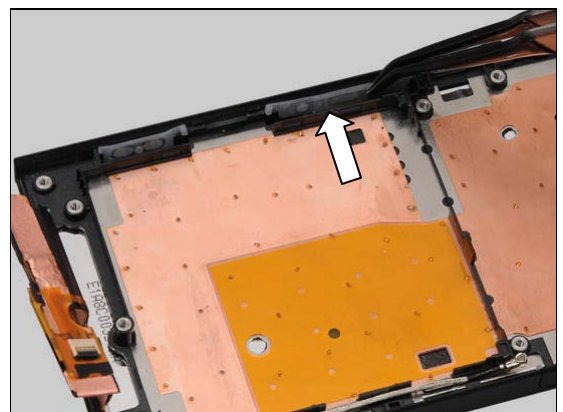
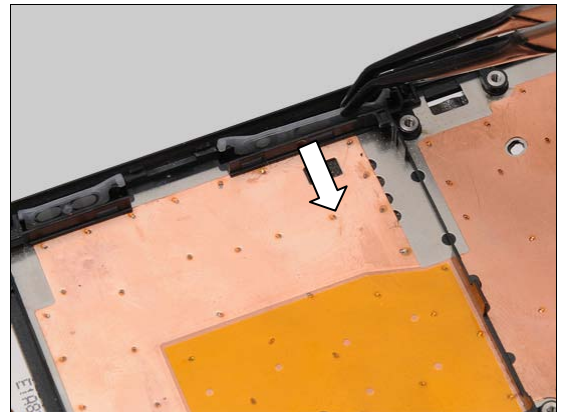
#### REMOVAL

Detach the Key Volume by using the Flex Film Assembly Tool and remove it.

#### INSTALLATION

Place the new Key Volume with proper direction into the slot.

Press to secure its position.





## Replacement

### 4.34 Loudspeaker

*Follow the 3.1, 3.3, 3.4 Disassembly instructions!*

*Follow the 4.27 Removal instructions!*

Carry out the Removal as described below.

Prepare the new Loudspeaker.

Carry out the Installation as described below.

*Follow the 4.27 Installation instructions!*

*Follow the 5.4, 5.5, 5.7 Reassembly instructions!*

#### REMOVAL

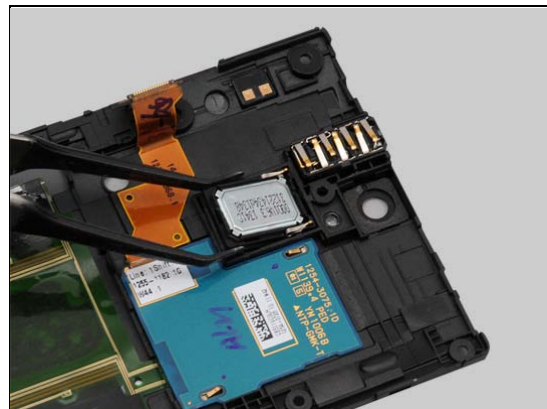
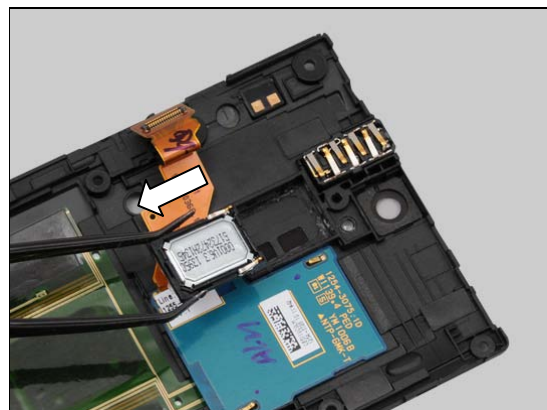
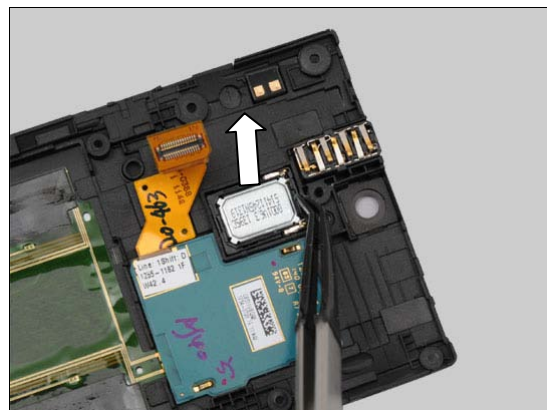
Insert the Flex Film Assembly Tool underneath and lift up to detach the Loudspeaker.

**Scrap! Not to be reused!**

Remove it by using the Flex Film Assembly Tool.

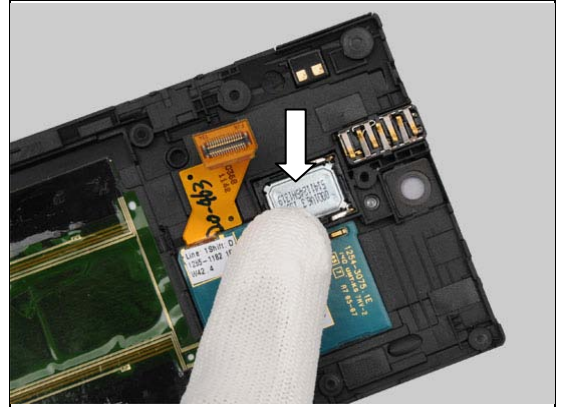
#### INSTALLATION

Clean the remained adhesive and place the new Loudspeaker into its socket.



## Replacement: Loudspeaker

Press along the surface to secure its attachment.



## Replacement

### 4.35 Main Antenna

*Follow the 3.1 – 3.4 Disassembly instructions!*

Carry out the Removal as described below.

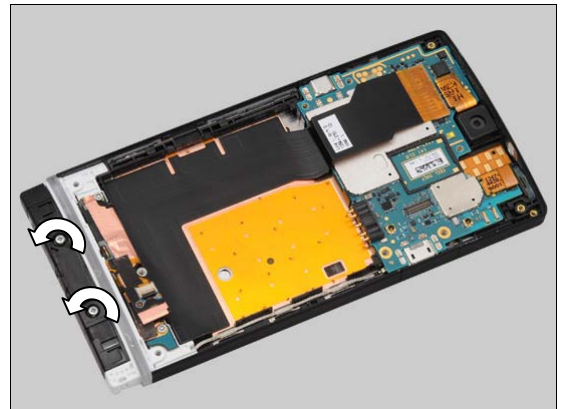
Prepare the new Main Antenna.

Carry out the Installation as described below.

*Follow the 5.4 – 5.7 Reassembly instructions!*

#### REMOVAL

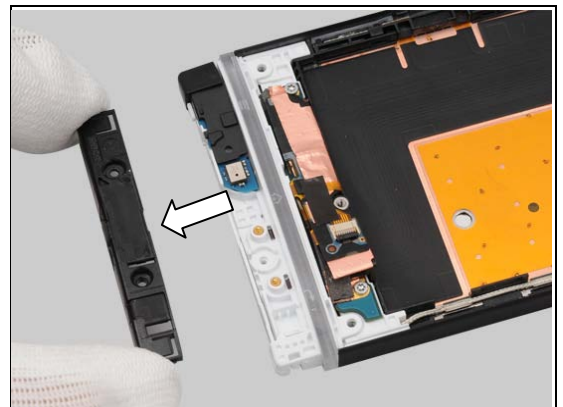
Remove the two Screw 6.0x1.4 by Bits(JCIS No 0).



Insert the Guitar Pick to release the hooks of the Main Antenna.



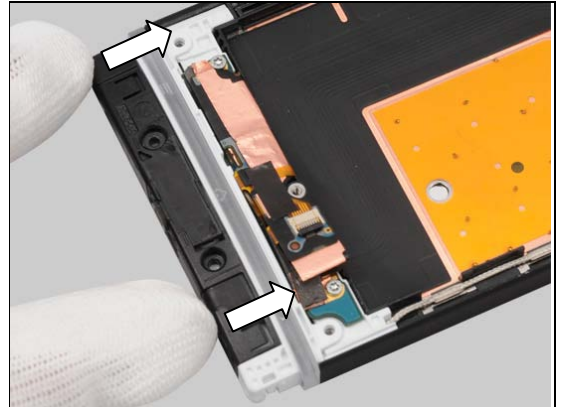
Remove the Main Antenna.



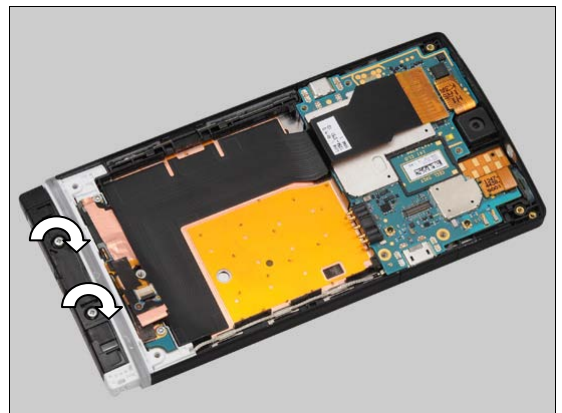
## Replacement: Main Antenna

### INSTALLATION

Place the Main Antenna in the correct position and push to lock the hooks of the Main Antenna.



Apply 10 Ncm torque when tightening the two Screw 6.0x1.4 with Bits (JCIS No 0).



## Replacement

### 4.36 NFC Antenna

*Follow the 3.1, 3.3, 3.4 Disassembly instructions!*

*Follow the 4.38 Removal instructions!*

Carry out the Removal as described below.

Prepare the new NFC Antenna.

Carry out the Installation as described below.

*Follow the 4.38 Installation instructions!*

*Follow the 5.4, 5.5, 5.7 Reassembly instructions!*

#### REMOVAL

Peel off the NFC Antenna by using the Flex Film Assembly Tool.

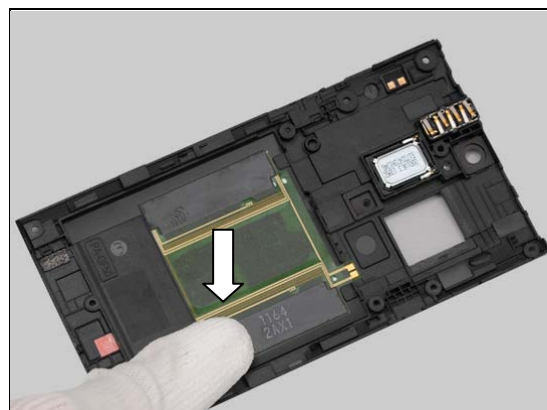
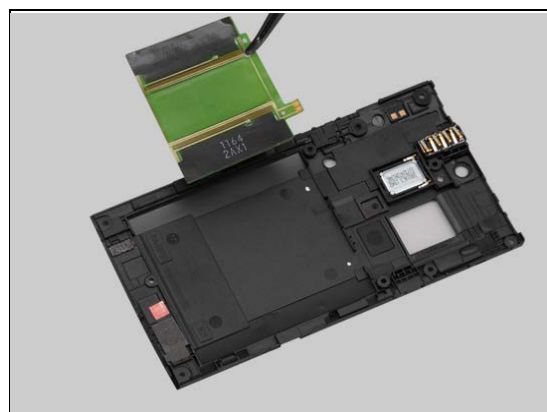
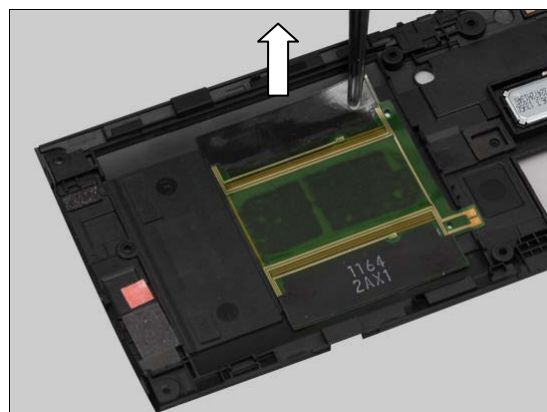
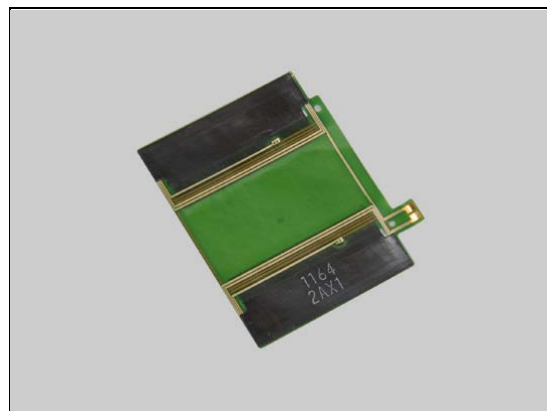
**Scrap! Not to be reused!**

#### INSTALLATION

Place the NFC Antenna in the correct position.

**Pick up the new NFC Antenna with the upper green part as shown in the picture!**

Press to secure its attachment.





## Replacement

### 4.37 PBA Bottom

*Follow the 3.1 – 3.4 Disassembly instructions!*

*Follow the 4.35, 4.13, 4.15 Removal instructions!*

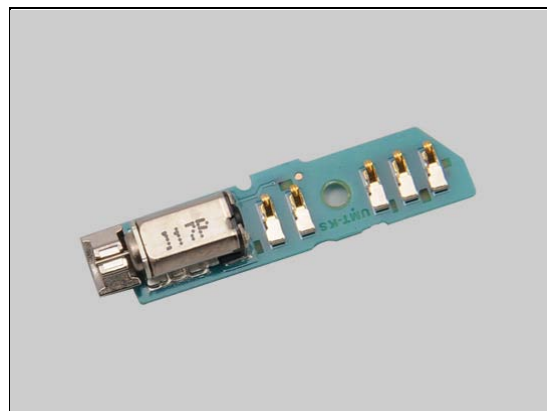
Carry out the Removal as described below.

Prepare the new PBA Bottom.

Carry out the Installation as described below.

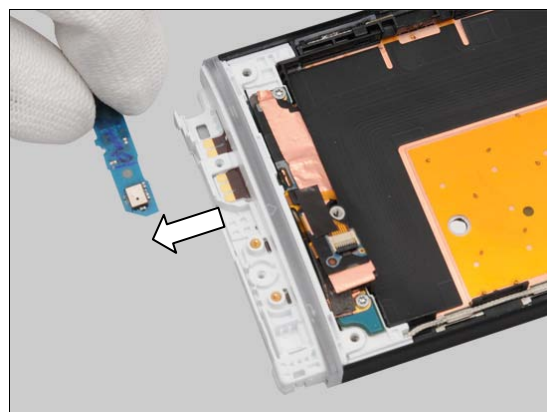
*Follow the 4.35, 4.13, 4.15, 4.22 Installation instructions!*

*Follow the 5.4 – 5.7 Reassembly instructions!*



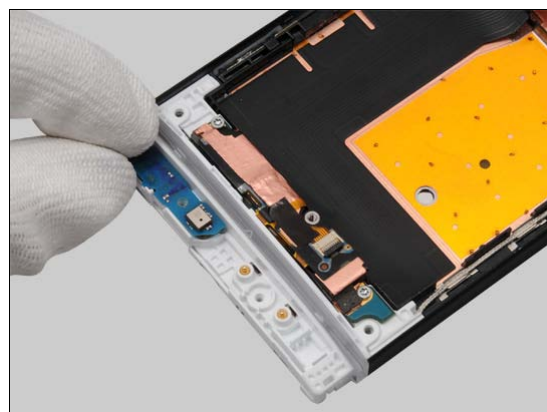
#### REMOVAL

Remove the PBA Bottom with your fingers.



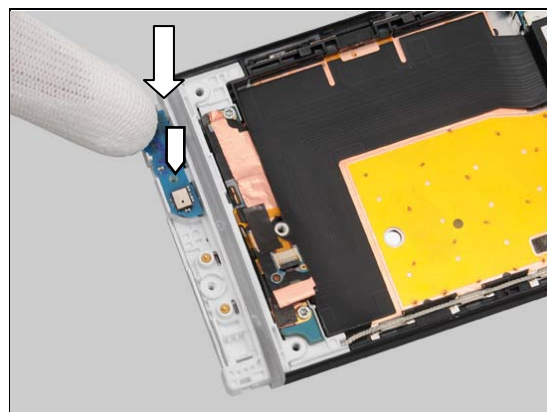
#### INSTALLATION

Place the PBA Bottom in the correct position.



Press to secure its position.

***The guiding hole must be aligned accurately between the PBA Bottom and the Cover Transparent Assy!***





## Replacement

### 4.38 PBA NFC

*Follow the 3.1, 3.3, 3.4 Disassembly instructions!*

*Follow 4.26 Removal Instructions!*

Carry out the Removal as described below.

Prepare the new PBA NFC.

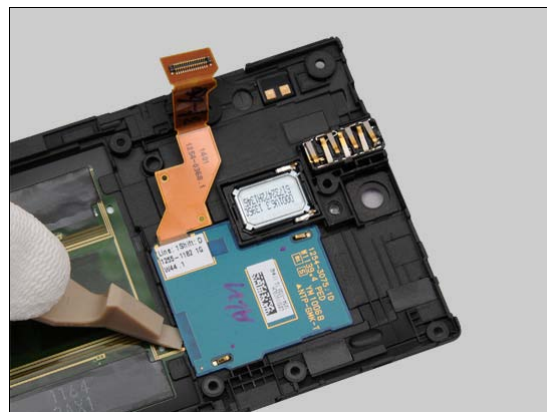
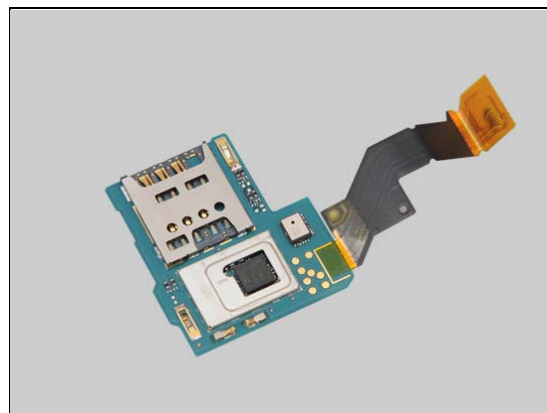
*Follow the 4.42, 4.43, 4.26 Installation instructions*

Carry out the Installation as described below.

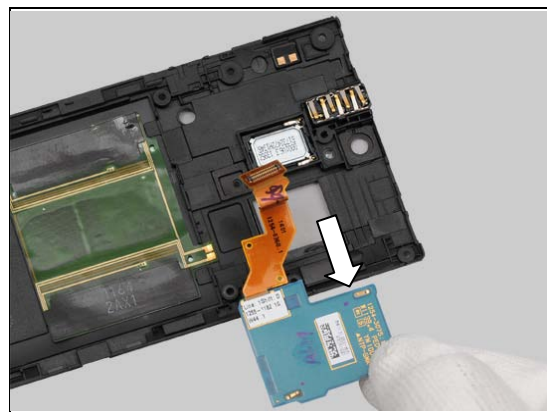
*Follow the 5.4, 5.5, 5.7 Reassembly instructions!*

#### REMOVAL

Insert the Front Opening Tool to detach the PBA NFC.

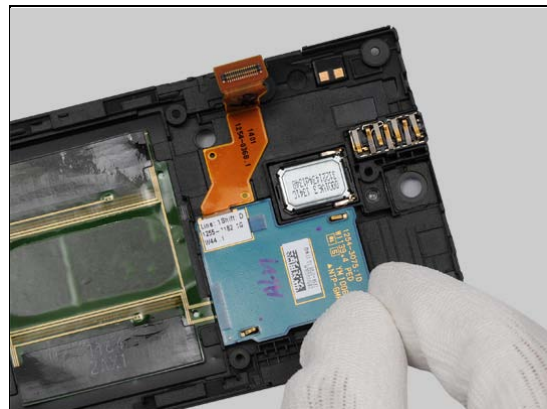


Remove the PBA NFC with your fingers.



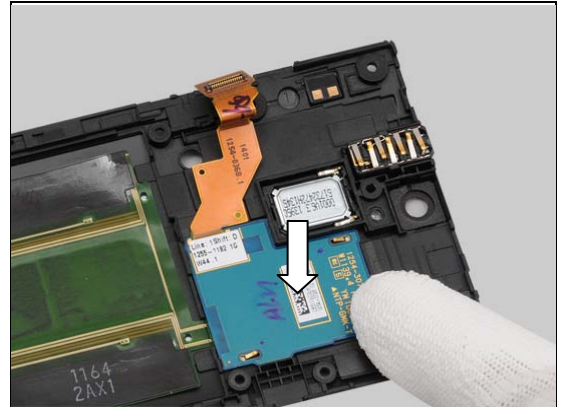
#### INSTALLATION

Place the PBA NFC in the correct position.



## Replacement: PBA NFC

Press to secure its position.



## Replacement

### 4.39 RF Cable

*Follow the 3.1, 3.4 – 3.7 Disassembly instructions!*

Carry out the Removal as described below.

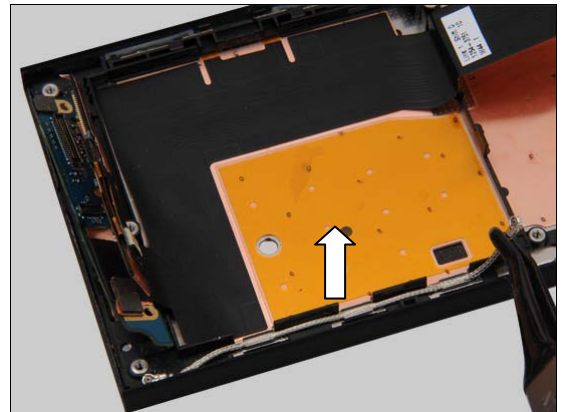
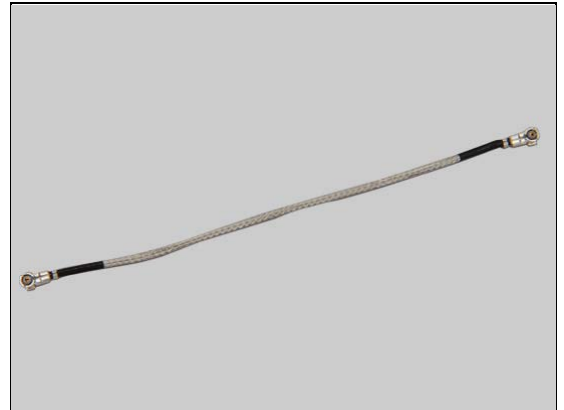
Prepare the new RF Cable

Carry out the Installation as described below.

*Follow the 5.1 –5.5, 5.7 Reassembly instructions!*

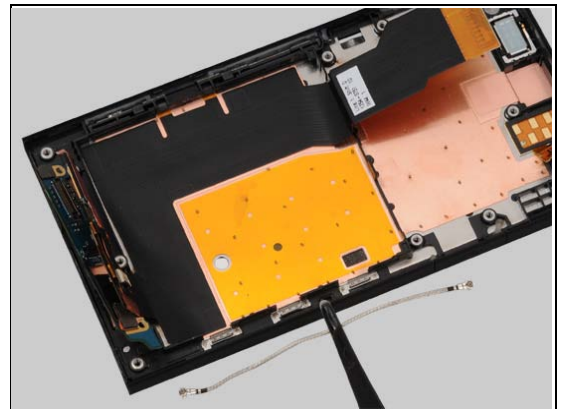
#### REMOVAL

Release the RF Cable hooks by using the Flex Film Assemble Tool.

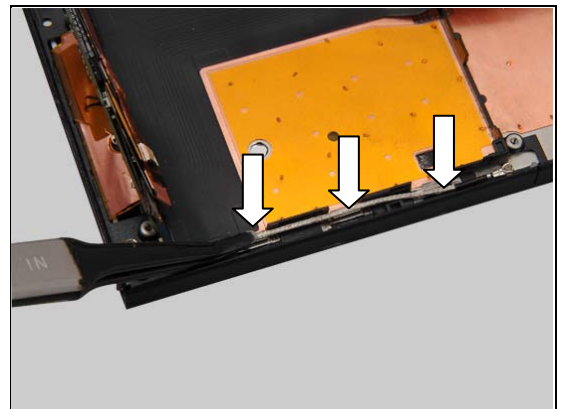


#### INSTALLATION

Place the RF Cable into its socket.



Press to snap the hooks of the RF Cable by using the Flex Film Assemble Tool.



## Replacement

### 4.40 Sheet GPS Ant

*Follow the 3.1 Disassembly instructions!*

Carry out the Removal as described below.

Prepare the new Sheet GPS Ant

Carry out the Installation as described below.

*Follow the 5.7 Reassembly instructions!*

#### REMOVAL

Peel off the Sheet GPS Ant by using the Flex Film Assembly Tool.

**Scrap! Not to be reused!**

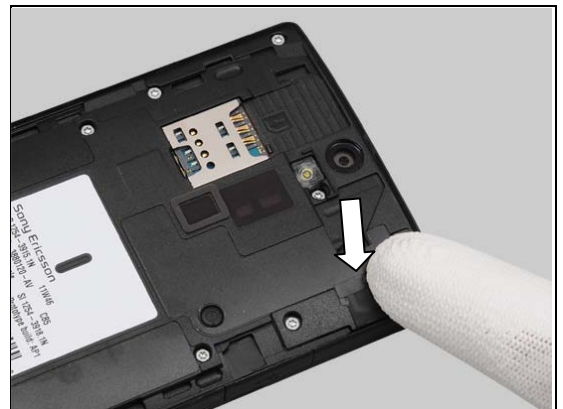


#### INSTALLATION

Place the Sheet GPS Ant in the correct position.



Press to secure its attachment.



## Replacement

### 4.41 Sheet LCD FPC

*Follow the 3.1, 3.3, 3.4 Disassembly instructions!*

Carry out the Removal as described below.

Prepare the new Sheet LCD FPC.

Carry out the Installation as described below.

*Follow the 5.4, 5.5, 5.7 Reassembly instructions!*

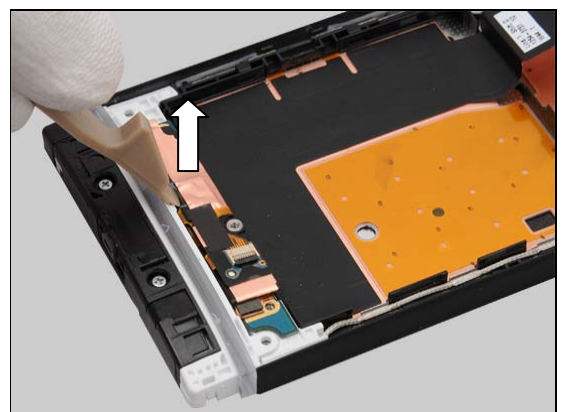
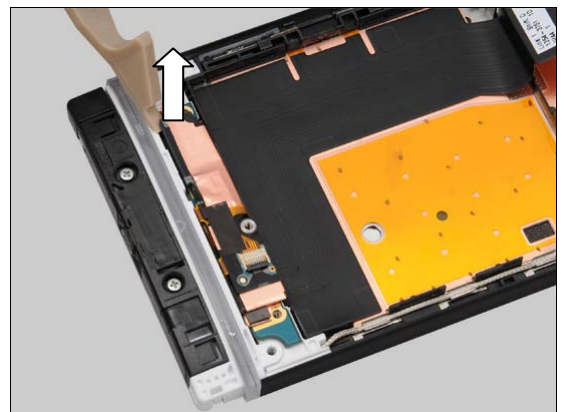
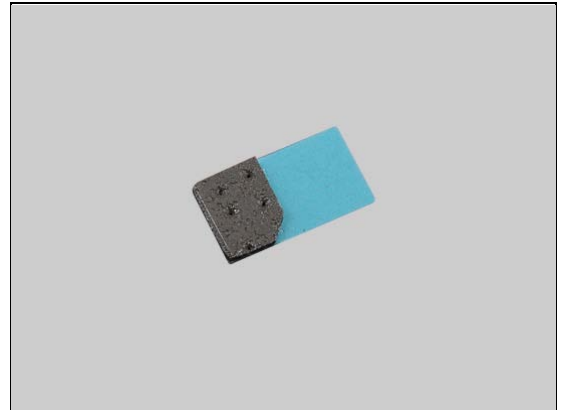
#### REMOVAL

Unsnap the LCD BtB connectors by using the Front Opening Tool.

Unsnap the touch panel BtB connectors by using the Front Opening Tool.

Peel off the Sheet LCD FPC by using the Tweezers.

**Scrap! Not to be reused!**

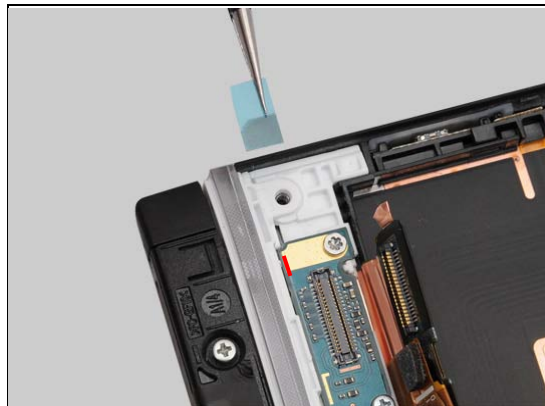




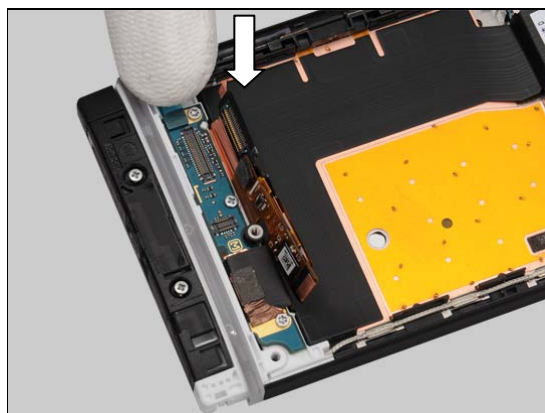
## Replacement: Sheet LCD FPC

### INSTALLATION

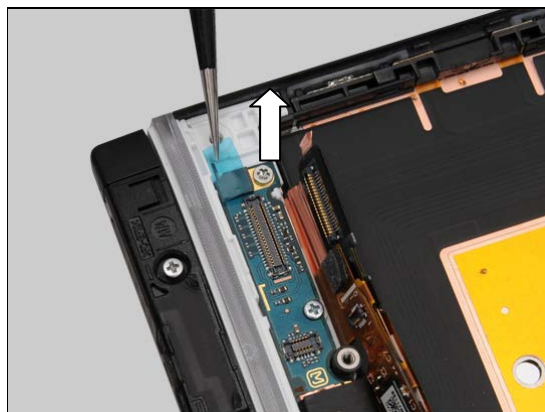
Place the new Sheet LCD FPC aligning the guiding line as shown in the picture.



Press to secure its attachment.



Peel off the protective film.





## Replacement

### 4.42 Sheet NFC FPC

*Follow the 3.1, 3.3, 3.4 Disassembly instructions!*

*Follow the 4.38 Removal instructions!*

Carry out the Removal as described below.

Prepare the new Sheet NFC FPC.

Carry out the Installation as described below.

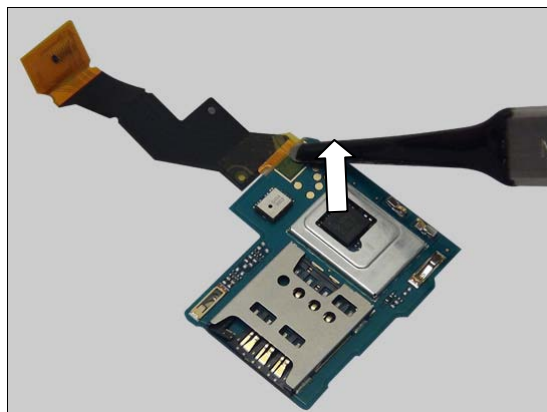
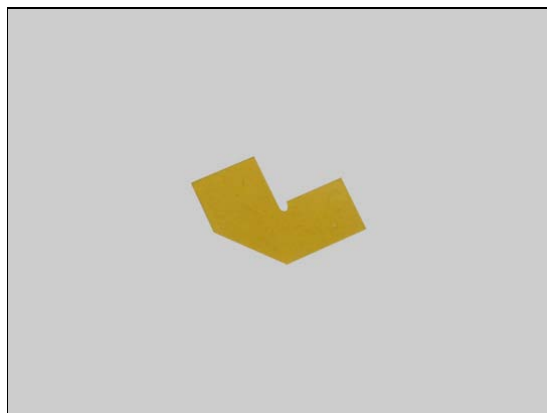
*Follow the 4.38 Installation instructions!*

*Follow the 5.4, 5.5, 5.7 Reassembly instructions!*

#### REMOVAL

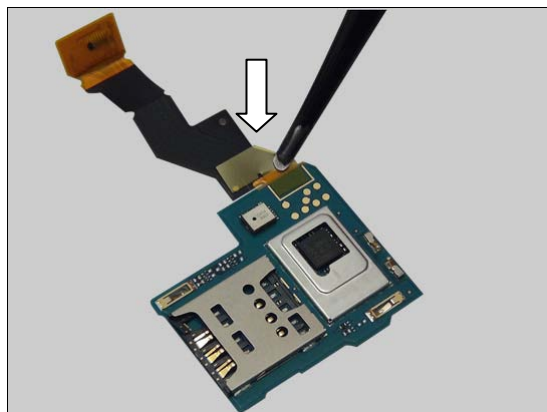
Peel off the Sheet NFC FPC by using the Tweezers.

**Scrap! Not to be reused!**

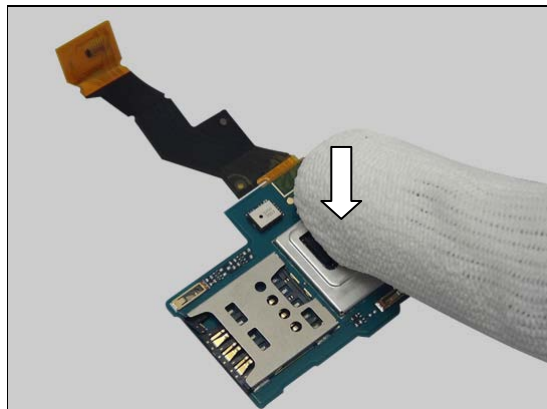


#### INSTALLATION

Place the new Sheet NFC FPC in the correct position.



Press to secure its attachment.



## Replacement

### 4.43 Sheet NFC Shield

*Follow the 3.1, 3.3, 3.4 Disassembly instructions!*

*Follow the 4.38 Removal instructions!*

Carry out the Removal as described below.

Prepare the new Sheet NFC Shield.

Carry out the Installation as described below.

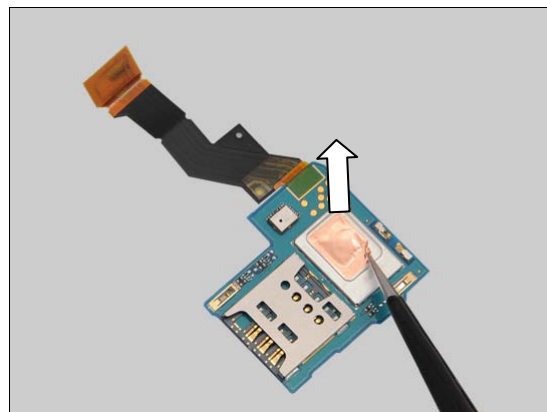
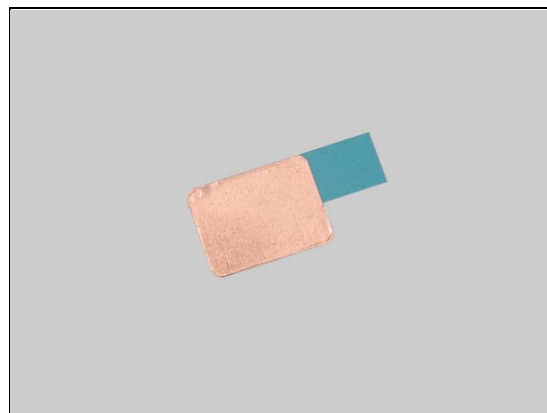
*Follow the 4.38 Installation instructions!*

*Follow the 5.4, 5.5, 5.7 Reassembly instructions!*

#### REMOVAL

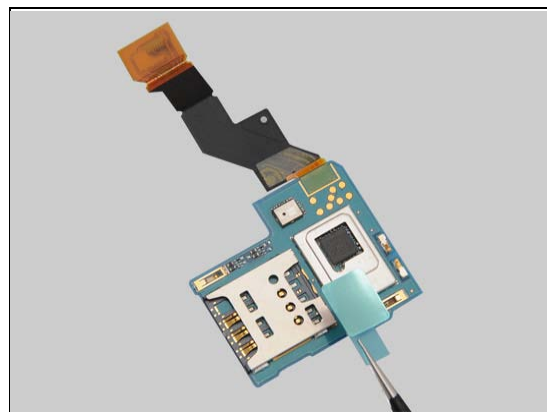
Peel off the Sheet NFC Shield by using the Tweezers.

**Scrap! Not to be reused!**

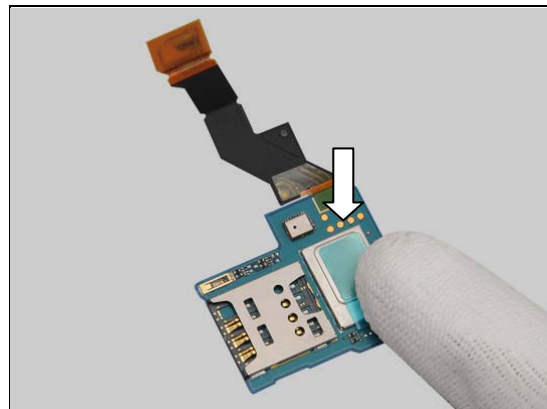


#### INSTALLATION

Place the new Sheet NFC Shield in the correct position.

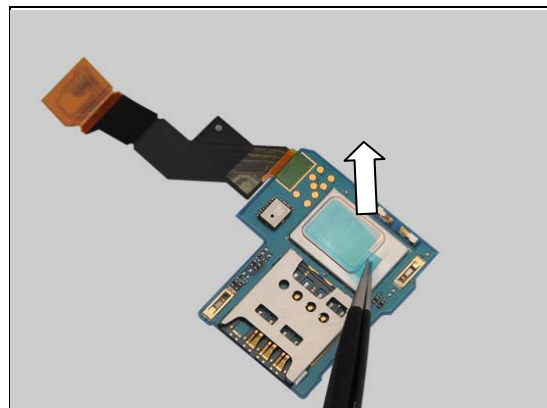


Press to secure its attachment.



## Replacement: Sheet NFC Shield

Peel off the protective film.



## Replacement

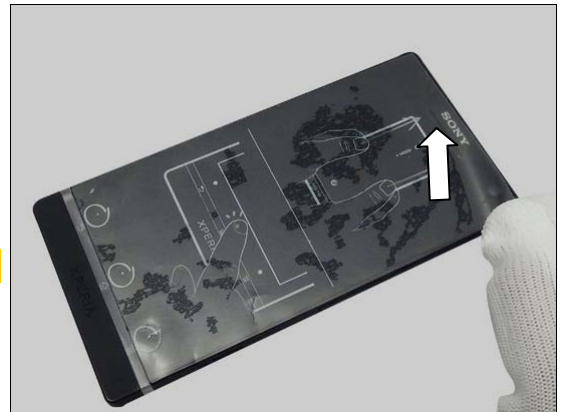
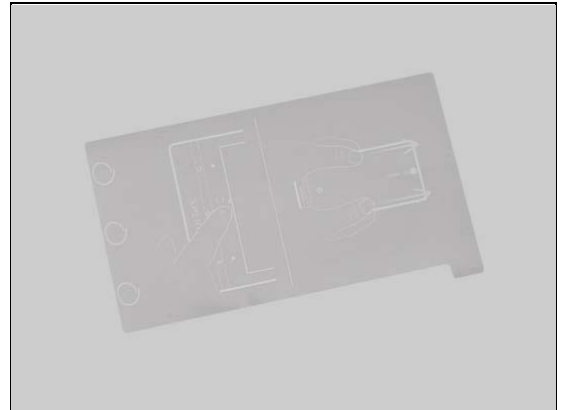
### 4.44 Sheet Protection LCD

Carry out the Removal as described below.  
Prepare the new Sheet Protection LCD.  
Carry out the Installation as described below.

#### REMOVAL

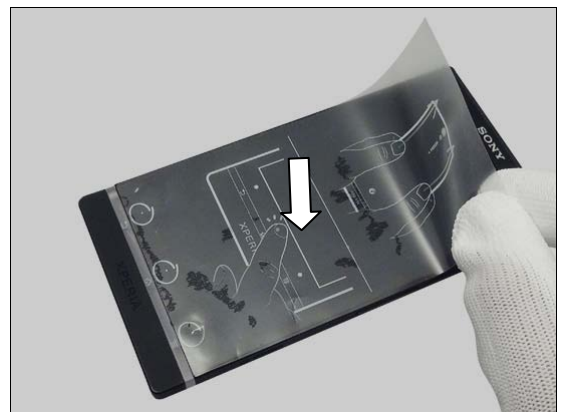
Peel off the Sheet Protection LCD with your fingers.

**Scrap! Not to be reused!**

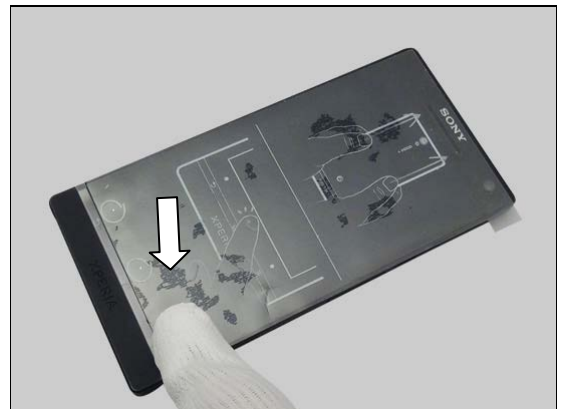


#### INSTALLATION

Place the Sheet Protection LCD in the correct position.



Press to secure its attachment.



## Replacement

### 4.45 Shield Can BB A

*Follow the 3.1, 3.3 – 3.6 Disassembly instructions!*

Carry out the Removal as described below.

Prepare the new Shield Can BB A.

Carry out the Installation as described below.

*Follow the 5.2 –5.5, 5.7 Reassembly instructions!*

#### REMOVAL

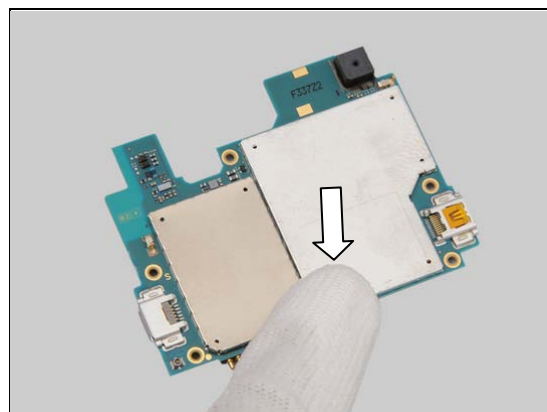
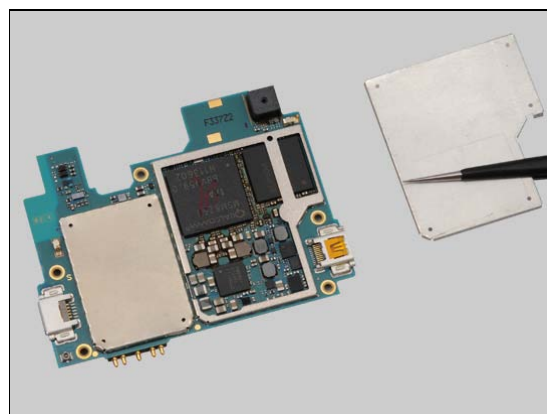
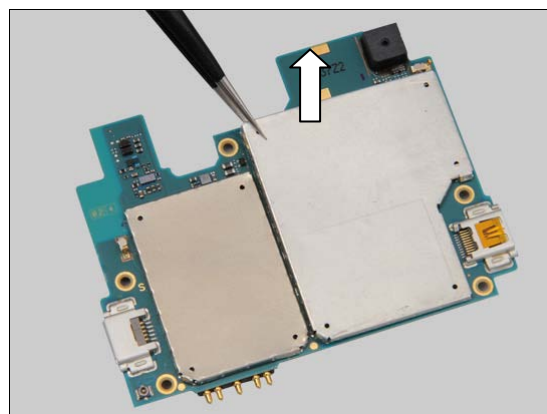
Insert the Tweezers into the corners of the Shield Can BB A and pull upwards to release it.

**Scrap! Not to be reused!**

Remove the Shield Can BB A.

#### INSTALLATION

Place the new Shield Can BB A and press gently until it is securely attached.



## Replacement

### 4.46 Shield Can BB B

*Follow the 3.1, 3.3 – 3.6 Disassembly instructions!*

Carry out the Removal as described below.

Prepare the new Shield Can BB B.

Carry out the Installation as described below.

*Follow the 5.2 –5.5, 5.7 Reassembly instructions!*

#### REMOVAL

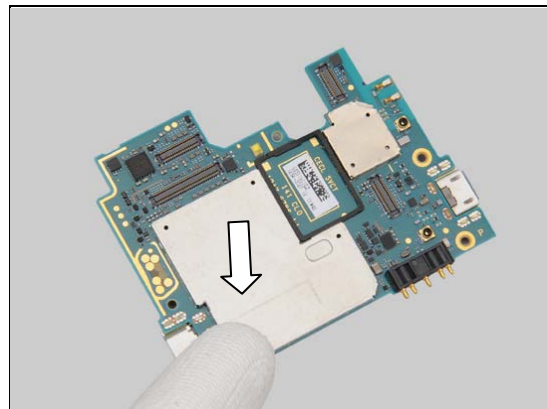
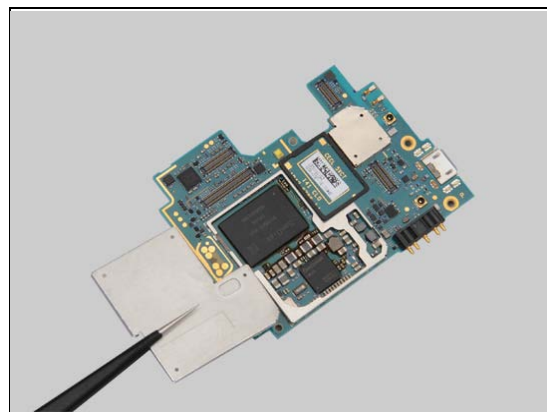
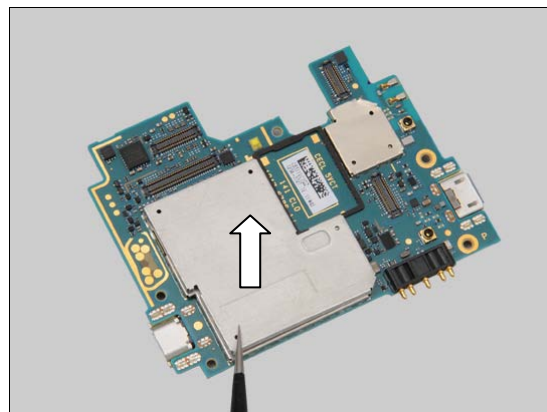
Insert the tweezers into the corners of the Shield Can BB B and pull upwards to release it.

**Scrap! Not to be reused!**

Remove the Shield Can BB B.

#### INSTALLATION

Place the new Shield Can BB B and press gently until it is securely attached.





## Replacement

### 4.47 Shield Can Lid Non Cell

*Follow the 3.1, 3.3 – 3.6 Disassembly instructions!*

Carry out the Removal as described below.

Prepare the new Shield Can Lid Non Cell.

Carry out the Installation as described below.

*Follow the 5.2 –5.5, 5.7 Reassembly instructions!*

#### REMOVAL

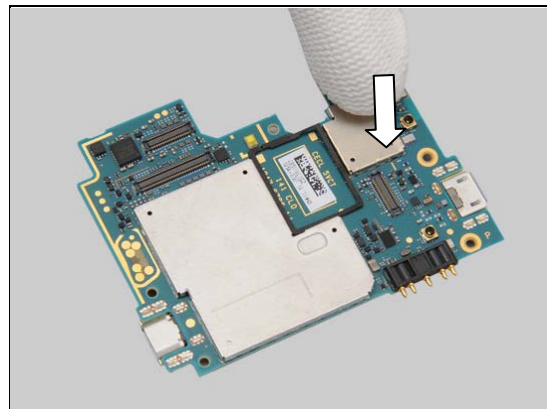
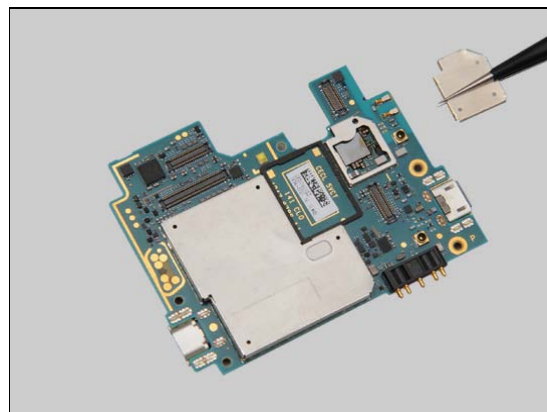
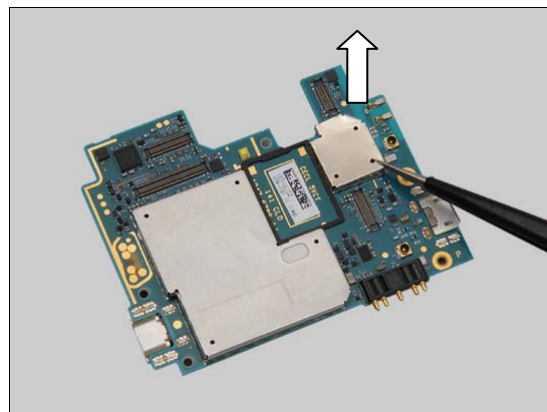
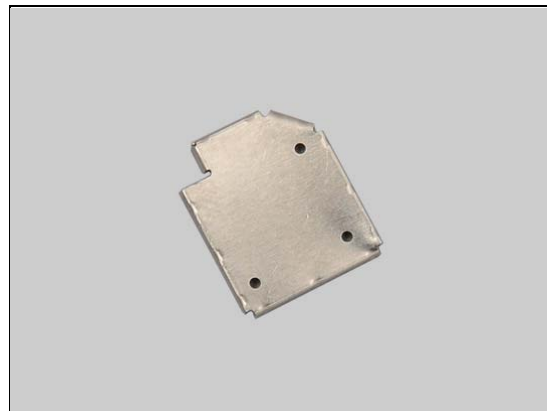
Insert the tweezers into the corners of the Shield Can Lid Non Cell and pull upwards to release it.

**Scrap! Not to be reused!**

Remove the Shield Can Lid Non Cell.

#### INSTALLATION

Place the new Shield Can Lid Non Cell and press gently until it is securely attached.



## Replacement

### 4.48 Shield Can RF

*Follow the 3.1, 3.3 – 3.6 Disassembly instructions!*

Carry out the Removal as described below.

Prepare the new Shield Can RF.

Carry out the Installation as described below.

*Follow the 5.2 –5.5, 5.7 Reassembly instructions!*

#### REMOVAL

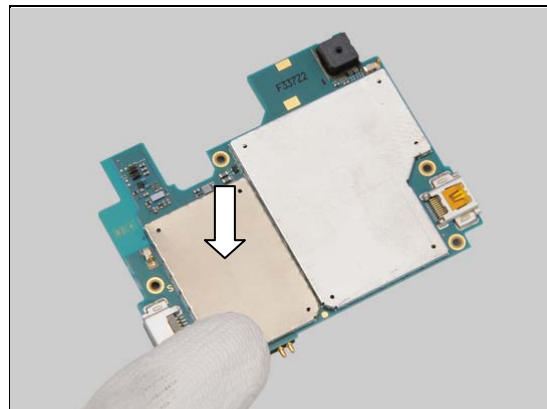
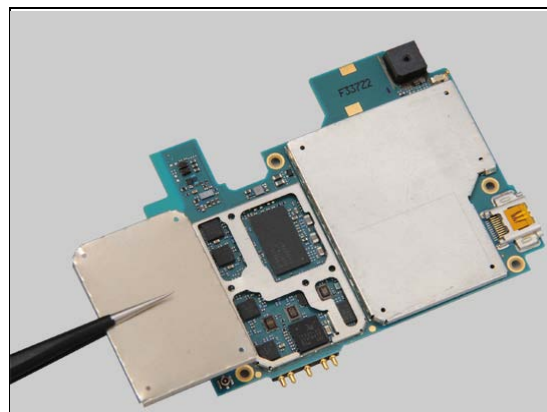
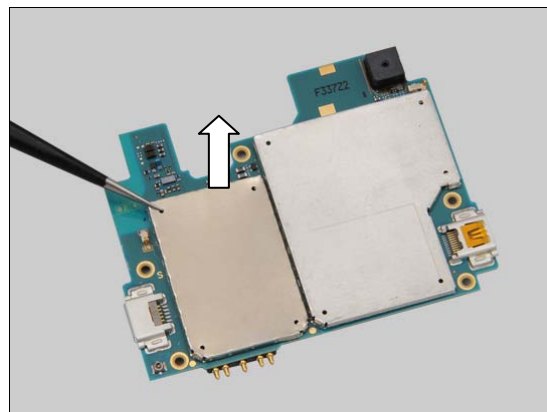
Insert the tweezers into the corners of the Shield Can RF and pull upwards to release it.

**Scrap! Not to be reused!**

Remove the Shield Can RF.

#### INSTALLATION

Place the new Shield Can RF and press gently until it is securely attached.



## Replacement

### 4.49 Water Indicator

*Follow the 3.1, 3.3, 3.4 Disassembly instructions!*

Carry out the Removal as described below.

Prepare the new Water Indicator.

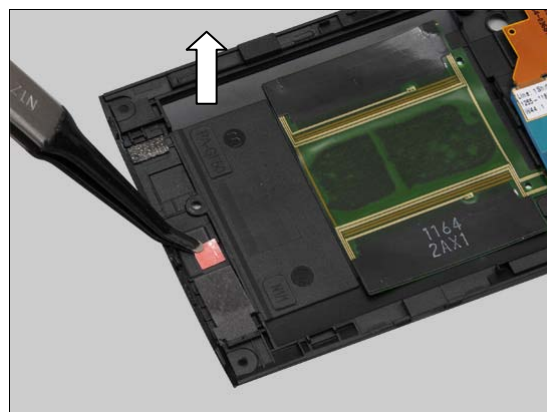
Carry out the Installation as described below.

*Follow the 5.4, 5.5, 5.7 Reassembly instructions!*

#### REMOVAL

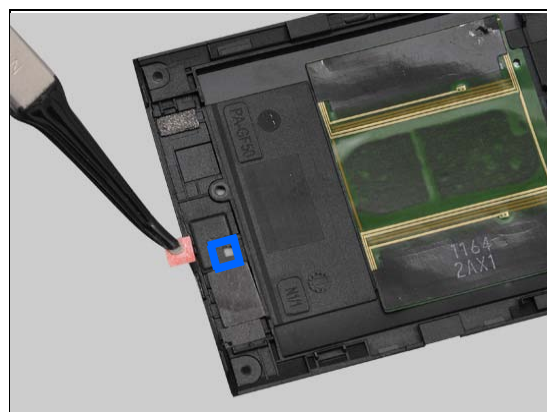
Peel off the Water Indicator by using the Flex Film Assembly Tool.

**Scrap! Not to be reused!**

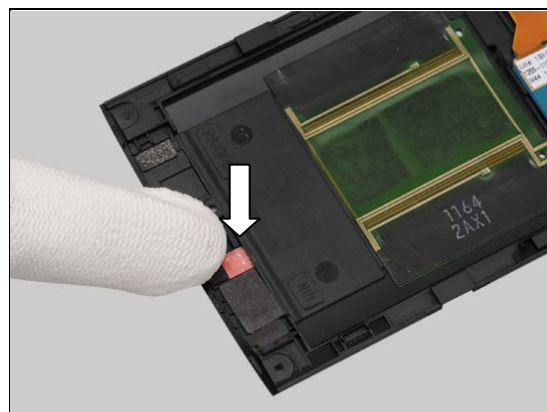


#### INSTALLATION

Place the new Water Indicator in the correct position.



Press to secure its attachment.



## Replacement

### 4.50 Water Indicator L

*Follow the 3.1, 3.3, 3.4 Disassembly instructions!*

Carry out the Removal as described below.

Prepare the new Water Indicator L.

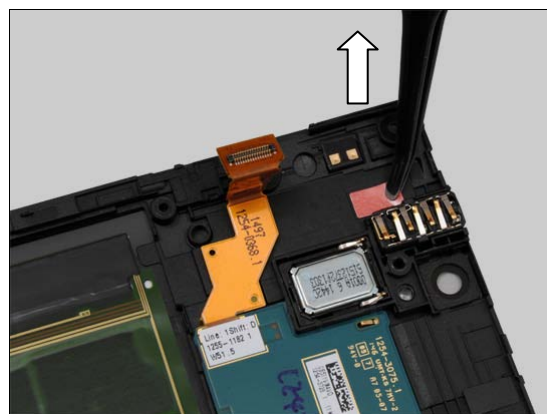
Carry out the Installation as described below.

*Follow the 5.4, 5.5, 5.7 Reassembly instructions!*

#### REMOVAL

Peel off the Water Indicator L by using the Flex Film Assembly Tool.

**Scrap! Not to be reused!**

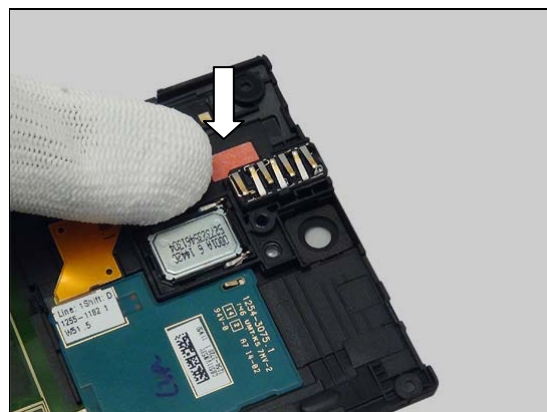


#### INSTALLATION

Place the new Water Indicator L in the correct position.



Press to secure its attachment.



## Replacement

### 4.51 Board Swap - Replacement

*Follow the 3.1 3.3 – 3.6 Disassembly instructions!*

Replace the Swap Board.

Reuse the Main Camera

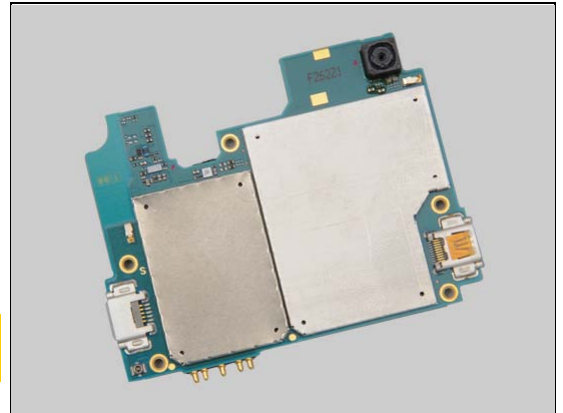
*Follow the 4.20 Installation instructions!*

*Follow the 5.2 –5.5, 5.7 Reassembly instructions!*

Press the **On/Off** key to power on the phone, wait the phone booting up on a table.

**Please DO NOT move the phone during starting up until "Select Language" menu is shown on the display!**

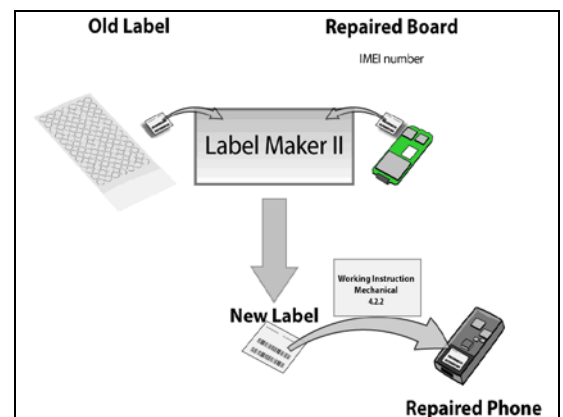
After "Select Language" menu, turn off the phone.



### 4.52 Board Swap – Change Label

#### CHANGE LABEL

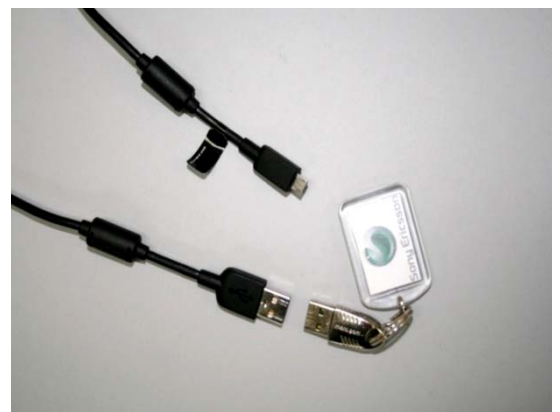
Follow the instructions in the Generic Repair Manual – Build swap for change of label.



### 4.53 Board Swap – Customize of Software

#### CUSTOMIZE OF SOFTWARE

*Follow the instructions in the Generic Repair Manual – Build swap for customization of the software.*

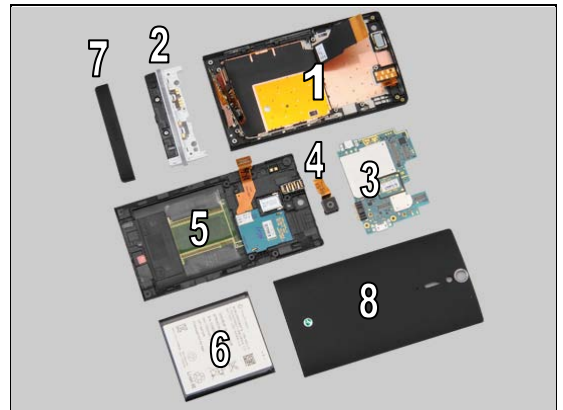




## 5 Reassembly

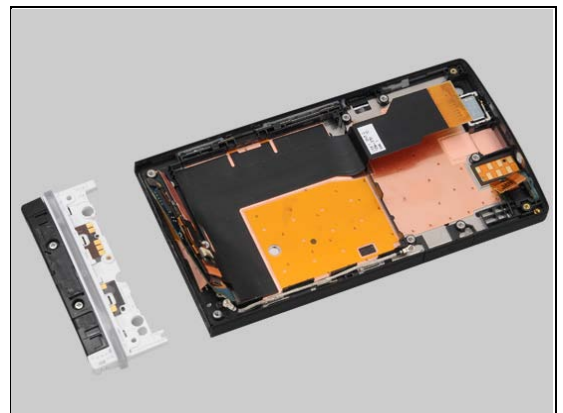
The reassembly is done in the following order:

1. Cover Front Assy
2. Cover Transparent Assy
3. Main PBA
4. Main Camera
5. Rear Frame Assy
6. Battery
7. Cover Bottom
8. Cover Rear Assy



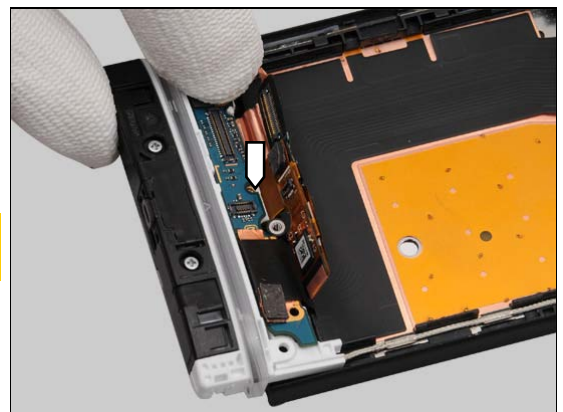
### 5.1 Cover Front Assy & Cover Transparent Assy

Prepare the Cover Transparent Assy and the Cover Front Assy.

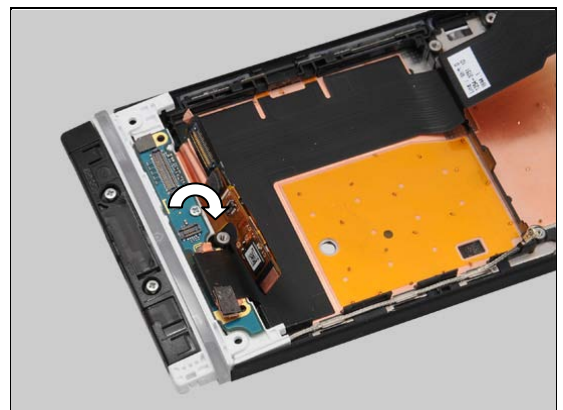


Put the sub PBA of the Main FPC on the Cover Transparent Assy.

**The hole must be aligned accurately between the sub PBA of the Main FPC and the Cover Transparent Assy!**



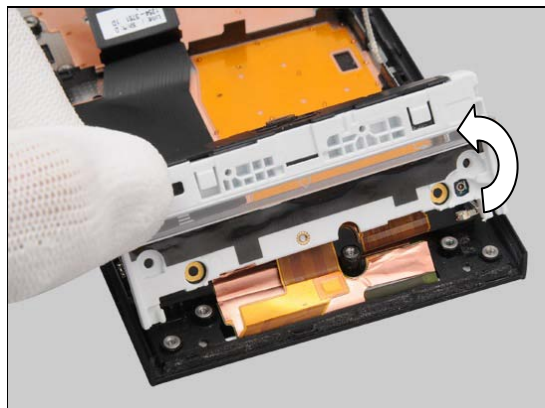
Apply 10 Ncm torque when tightening the one Screw  
Len:2.0 Diam:1.4 M with Bits (JCIS No 0).



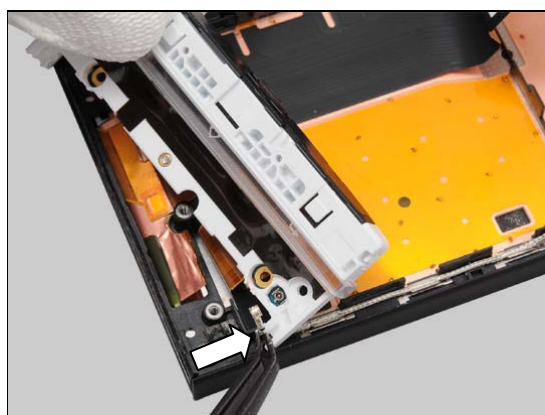


## Reassembly

Turn over the Cover Transparent Assy gently.



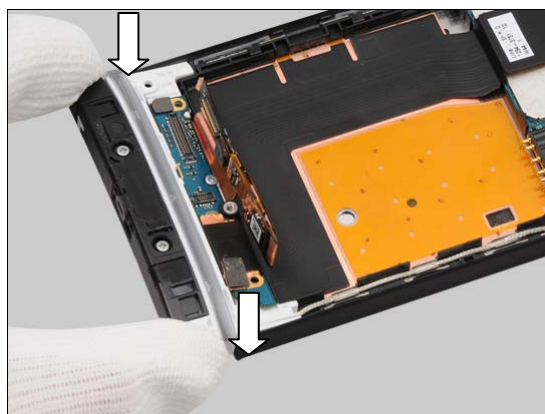
Put the RF cable into the socket on the Cover Transparent Assy and press to secure its position.



Connect one end of the RF Cable with the Flex Film Assembly Tool.

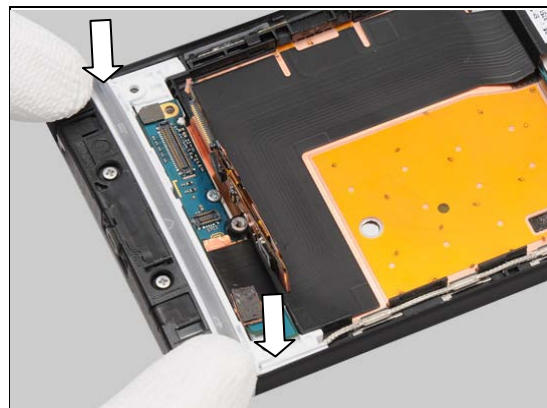


Turn over the Cover Transparent Assy gently and secure the Cover Transparent Assy into its sockets.

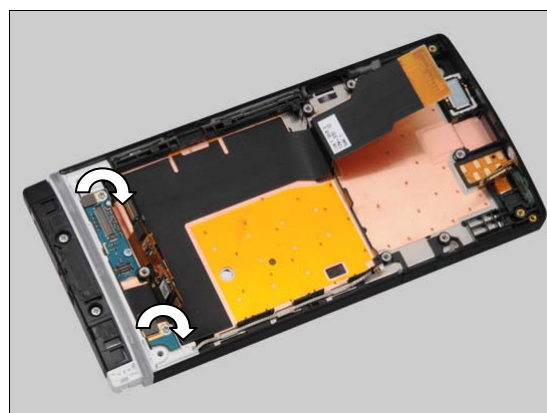


## Reassembly

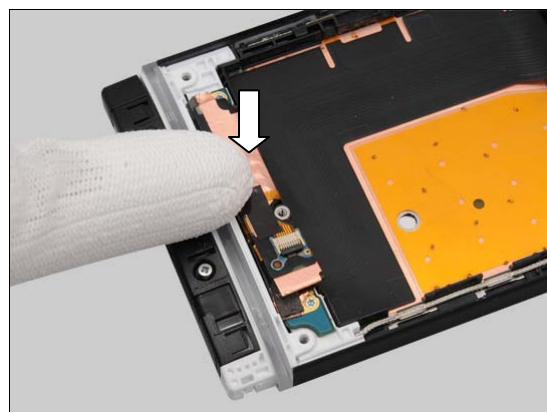
Press the Cover Transparent Assy to secure its position gently.



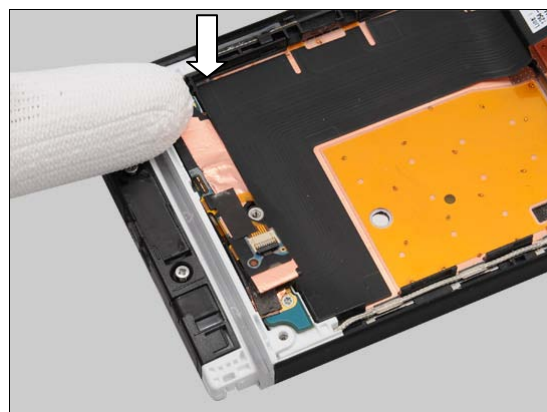
Apply 12 Ncm +/-1Ncm torque when tightening the two Screw 3.5x1.4 M with Bits (JCIS No 0).



Connect the touch panel BtB connector with fingers.

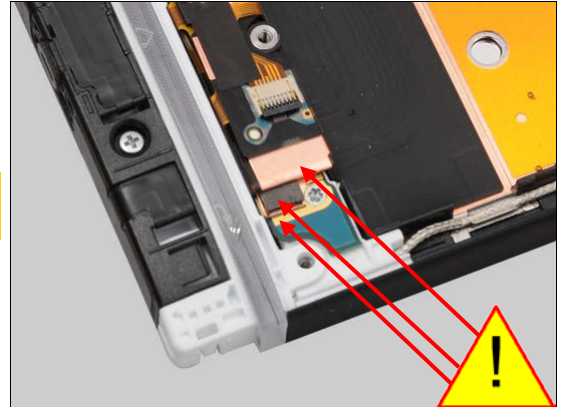


Connect the LCD BtB connector with fingers.



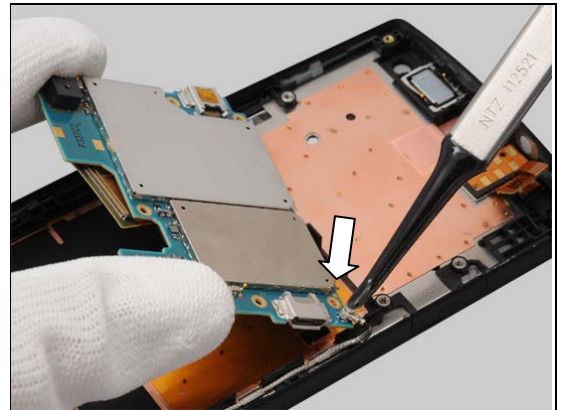
## Reassembly

**Make sure the three parts are secured as shown in the picture!**

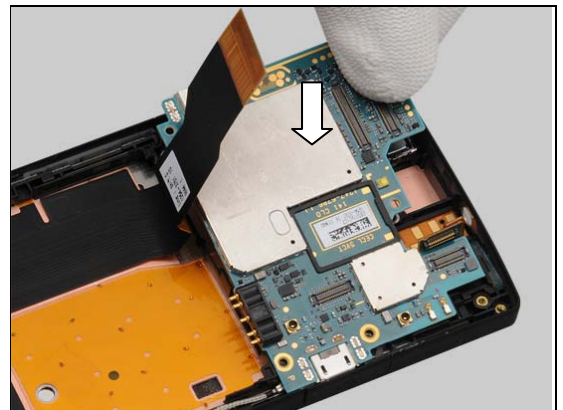


### 5.2 Main PBA

Connect one end of the RF Cable by using the Flex Film Assembly Tool.

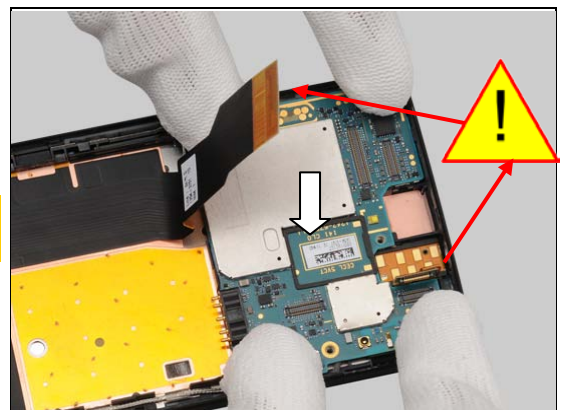


Turn over the main PBA and place the main PBA into its socket.



Press the main PBA to secure its position gently.

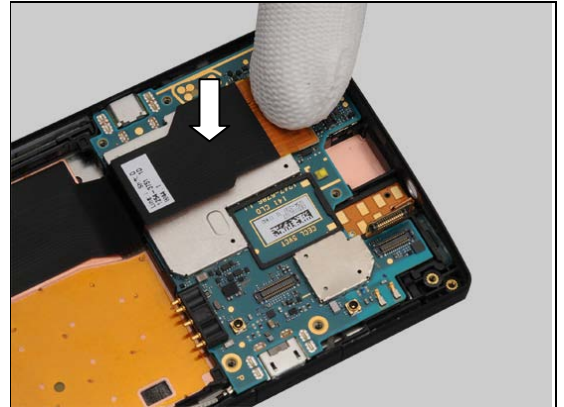
**Note: Do not push down the Main FPC and FPC Jack Assy BtB connectors under the main PBA!**



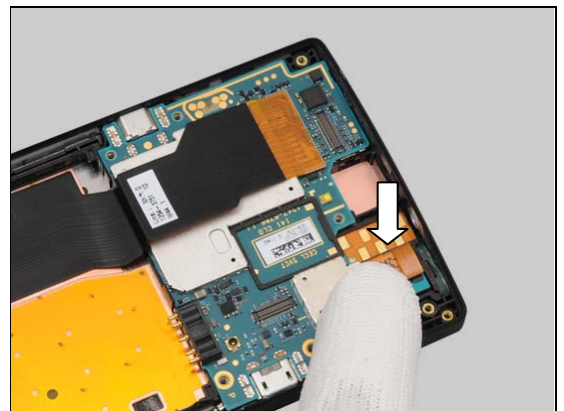


## Reassembly

Connect the Main FPC BtB connector with fingers.

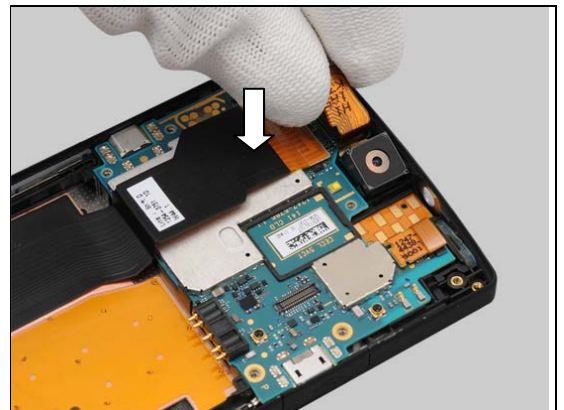


Connect the FPC Jack Assy BtB connector with fingers.

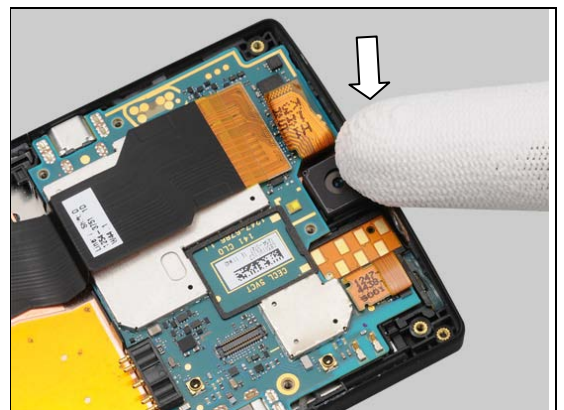


### 5.3 Main Camera

Place the Main Camera into its socket with 30 degree tilt with fingers.

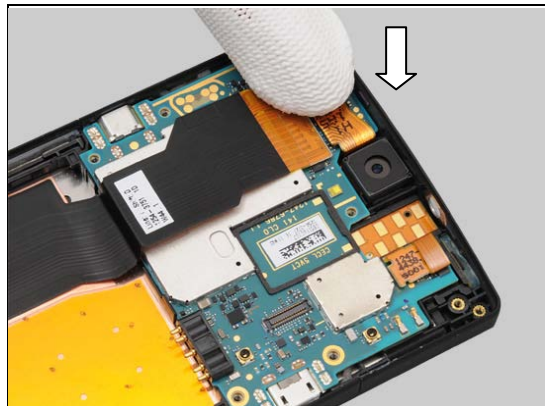


Press to secure its position gently.



## Reassembly

Connect the Main Camera BtB connectors with fingers.

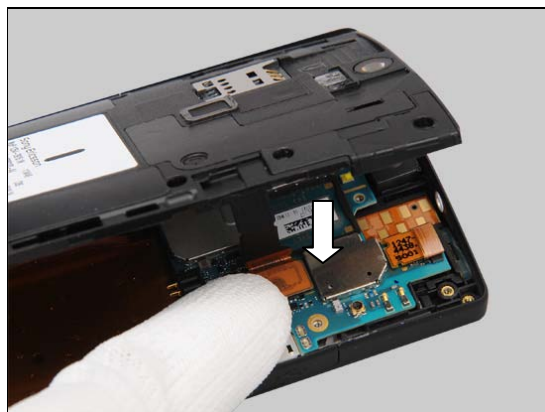


### 5.4 Rear Frame Assy

Prepare the Rear Frame Assy and the Unit.



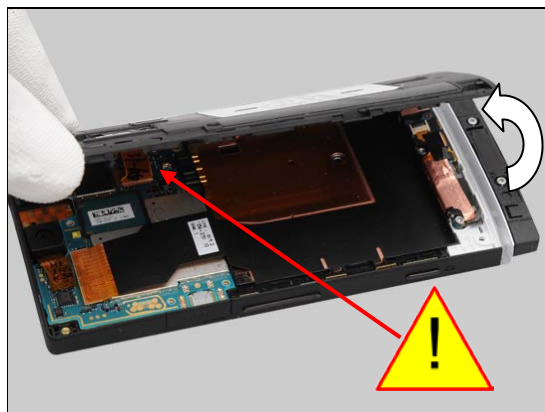
Connect the NFC BtB connector with fingers.



### 5.5 Battery

Raise the right side of the Rear Frame approximately 60° from the right side.

**Do not draw the NFC FPC more than 60°!**



## Reassembly

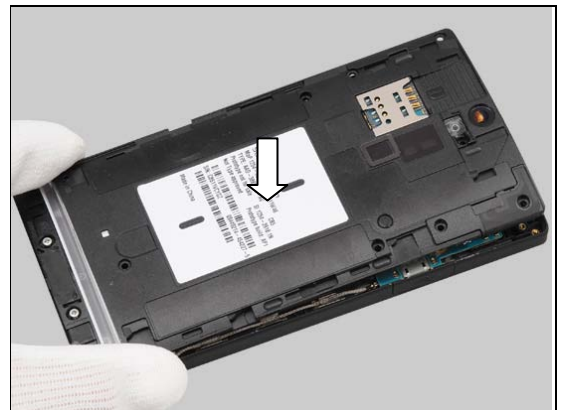
Place the Battery into its socket.



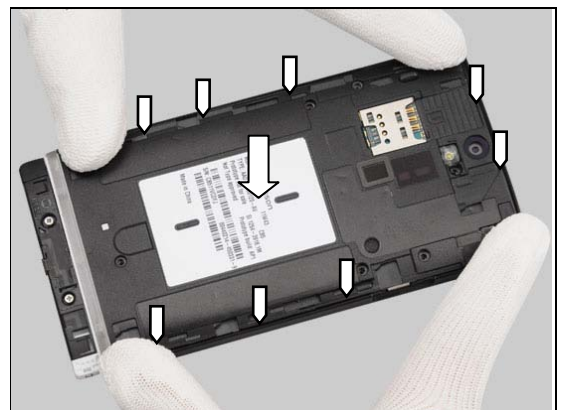
Press to secure its position.



Put the Rear Frame Assy in place.



Press to snap the hooks.





## Reassembly

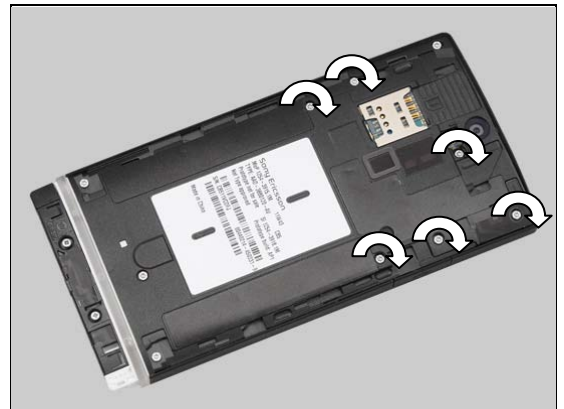
Apply 10 Ncm torque when tightening the three Screw 3.5x1.4 M with Bits (JCIS No 0).



Apply 10 Ncm torque when tightening the one Screw Len:2.6 Diam:1.4 M with Bits (JCIS No 0).



Apply 12 Ncm torque when tightening the six Screw 3.5x1.4 with T5.



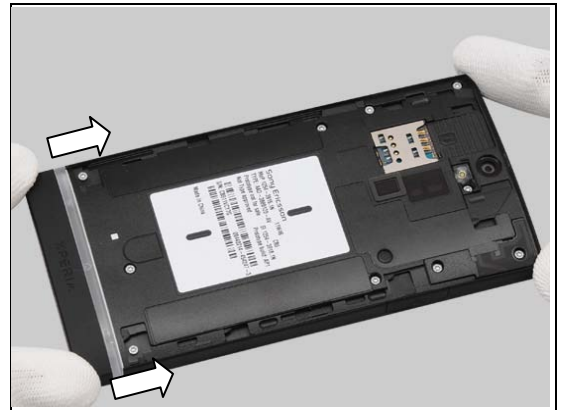
## Reassembly

### 5.6 Cover Bottom

Place the Cover Bottom on the Cover Transparent Assy.



Push to Snap the Cover Bottom.



## Reassembly

### 5.7 Cover Rear Assy

Place the Cover Battery.



Push to snap the Cover Rear Assy.



Press to snap the Cover Rear Assy.



## **6 Country of Origin Barcodes for Brazil/VIVO Labels**

Below is a link to a list of countries of origin. If you are printing a Brazil or VIVO label, scan the barcode corresponding to the correct country of origin for the “Fabricado” field.

## 7 Revision History

Rev.	Date	Changes / Comments
1	2012-Mar-2	Initial release
2	2012-Mar-6	Update Main Antenna replacement and template
3	2012-Mar-6	No change
4	2012-Mar-26	Update Cap USB replacement
5	2012-Apr-09	Update the screw description and picture of Cushion Speaker
6	2012-May-04	Update the repair process and the chapter 4.52
7	2012-Jun-08	Update the screw type in the chapter 3.3 and 5.5
8	2012-Jul-27	Update the chapter 4.50
9	2012-Aug-14	Update the chapter 4.27
10	2012-Aug-28	LT26ii Added
11	2012-Sep-19	Add new part 1254-4618
12	2012-Sep-28	Update the chapter 4.30